

**electricity  
north west**

Bringing energy to your door



**DSO Functions: Focus on  
flexible services and  
community energy  
support**

Stay connected...



[www.enwl.co.uk](http://www.enwl.co.uk)

# Who we are



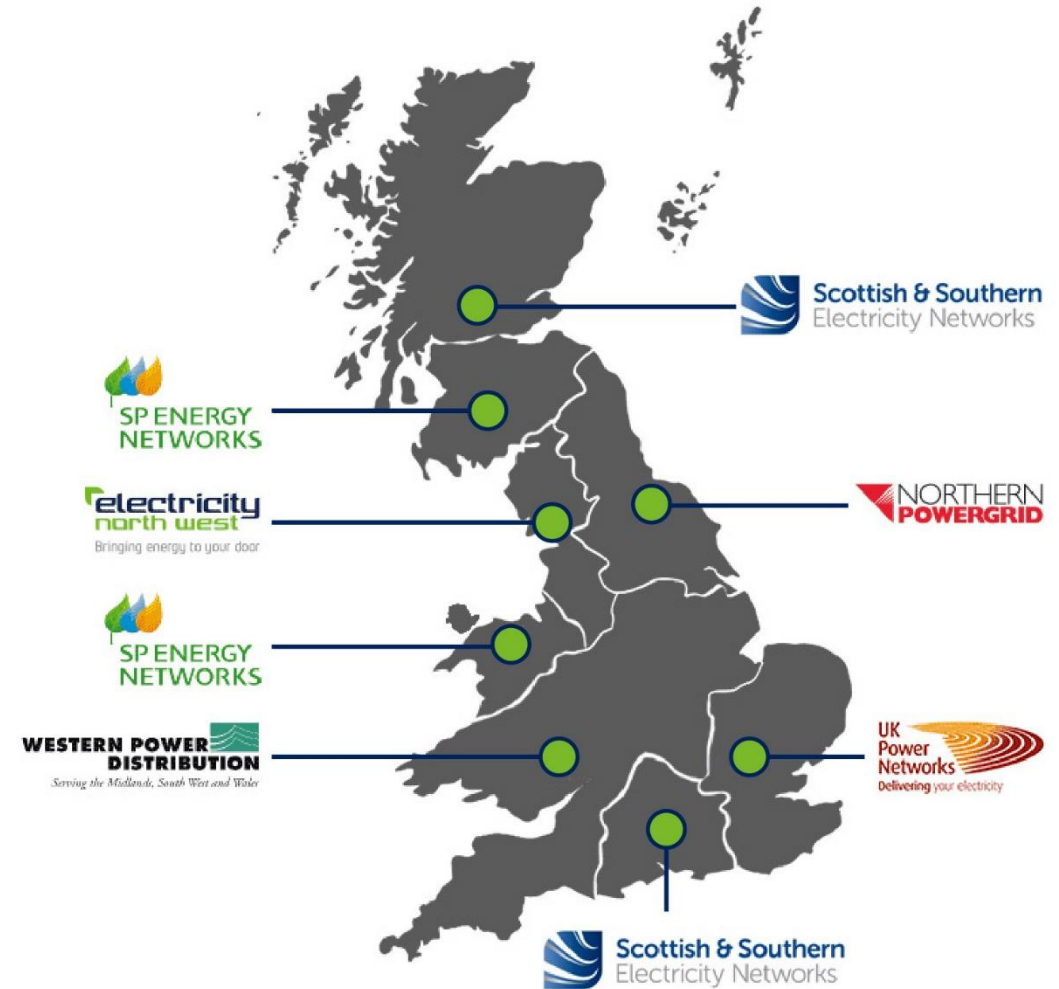
One of six Distribution Network Operators (DNOs)

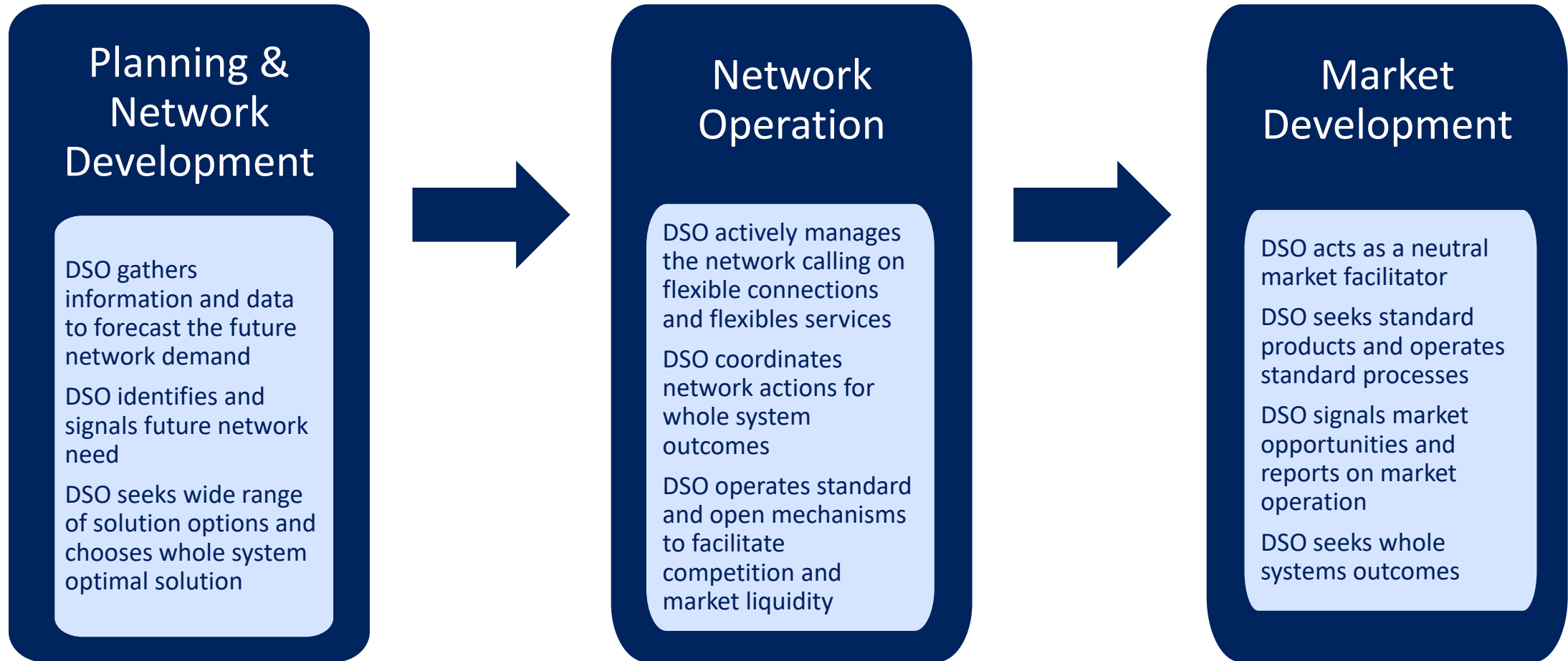
Responsible for distributing electricity to homes & businesses

Regulated industry

Our Business Plans are:

- Based on the needs of our customers and stakeholders
- Aligned to Government policy
- Approved by Ofgem
- Business Plan 2015-23 (ED1)
- Business Plan 2023-28 (ED2)





Open data sharing



## Transparency and openness

DSO Stakeholder Panel

[right to hear appeals, overturn decisions and review methodologies]

DSO Compliance Officer

Planning &  
Network  
Development

Network  
Operation

Market  
Development

Customer  
Support

## Open data sharing, via data portal

Share existing and new forms of planning data  
eg LV network heatmaps

Share existing and new forms of operational data  
eg constraint data



## Undertaking new DSO roles enables a smart and flexible system that:

- Adapts to changing customer behaviour,
- Delivers network capacity for use by customers at the most efficient price.

## Delivering network capacity means we will ‘buy’ and ‘build’ more capacity. To do so we need to develop the market to source this flexibility where and when it is needed:

- Choose flexibility first,
- Promote and purchase energy efficiency solutions.

**Only possible from sharing our data!**



**electricity  
north west**

Bringing energy to your door



# Electricity North West Flexibility Services

September 2022

Stay connected...

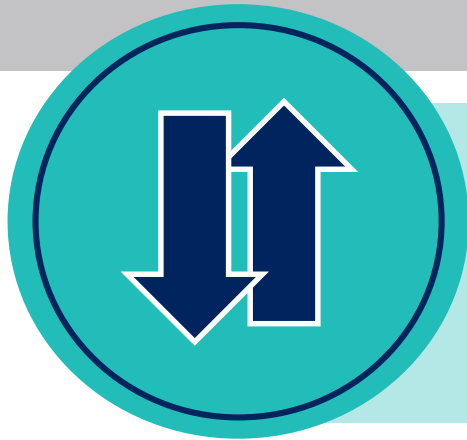
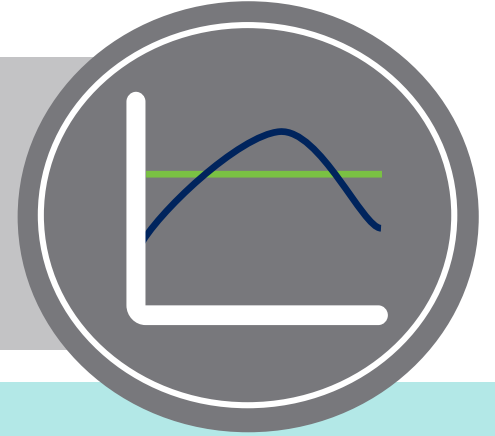


[www.enwl.co.uk](http://www.enwl.co.uk)

# What are Flexibility Services?



When the demand for electricity is greater than the amount that we can provide, flexibility services are procured to alleviate constraints on our network during peak times



These services are provided by companies or individual customers who own assets in our region such as generators, battery storage and EV charge points that can generate more or use less electricity when required

This allows us to balance supply and demand, ensuring a safe and reliable supply of energy for our customers



In return for providing extra capacity to the network, Flexibility providers will receive payment from the network

# What are the benefits?



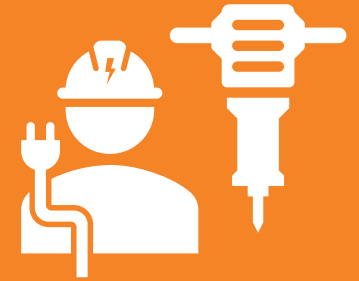
Utilises existing assets



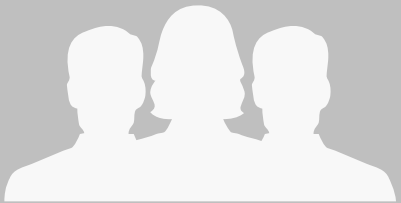
Reduces CO<sub>2</sub> emissions



Reduction in supply interruptions



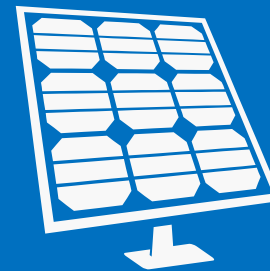
Less disruption



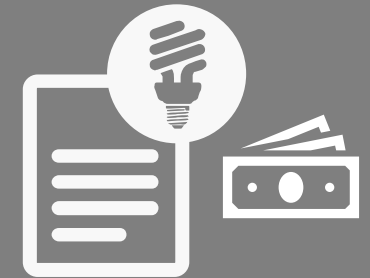
Supports community energy groups



Supports local businesses



Encourages Low Carbon Technologies




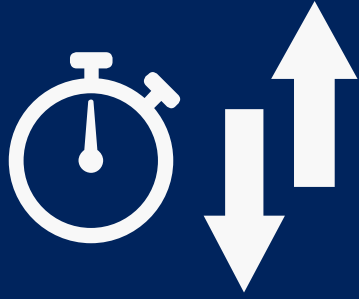



Cheaper bills for customers



# Our flexibility tenders



Location specific	Small entry requirements	Assets	Types of flexibility	Common products
	 <p>50kW</p>			
<p>We procure flexibility services as an alternative to reinforcement in areas where a constraint has been identified on the network</p>	<p>Our minimum capacity requirement is 50kW either from an individual asset or as part of an aggregated portfolio</p>	<ul style="list-style-type: none"> <li>• Industrial</li> <li>• Commercial</li> <li>• Aggregated domestic and non domestic portfolios</li> </ul>	<ul style="list-style-type: none"> <li>• Generation turn up/down</li> <li>• Demand turn up/down</li> <li>• Energy efficiency measures</li> </ul>	<p>We procure four common products (response types)</p> <ul style="list-style-type: none"> <li>• Sustain</li> <li>• Secure</li> <li>• Dynamic</li> <li>• Restore</li> </ul>



## Since 2018

Published  
**164**  
requirements

Carried out  
**10**  
tenders

Totalling  
**1500**  
MW of  
requirements

# Flexibility requirements map



**Kendal**

Map Spring 2022

W 23 - Delivery start date  
11/1/2022

W 23 - Months required  
Nov 22-Apr 23

W 23 - Times required  
11:00-20:00

W 23 - Days required  
Monday, Tuesday, Wednesday, Thursday,  
Friday, Saturday, Sunday

W 23 - Estimated availability hours  
196

W 23 - Estimated utilisation hours  
48

W 23 - Guide price  
£33,419

My Maps

Keyboard shortcuts

Select an icon to expand the details of each site requirement

You can find this map on our:

- [Flexible Services homepage](#)
- [Current requirements page](#)

The grey icons correlate to the information in the NDP, showing you whether a site is expected to require flexibility in the next **3-5** or **5-10** years.





We publish tenders twice per year in Spring and Autumn. Our Autumn 2022 tender will include opportunities to participate for the whole ED2 period 2023-2028.



We will be launching a consultation in the next few weeks asking stakeholders for their input into our current flexible services tenders and if/how we can improve them in future.



We will continue to utilise the ENA CEM tool to evaluate requirements for network investment; the value of flexible services; and subsequently any tender offers received. We are currently leading the development of a good practice guide.



We have developed a cost calculator for flexible services to assess their tender offers before submitting them to ensure that they are within the cost cap for the zone.



We will re-tender for the market platform(s) we use for Flexible Services Procurement, Dispatch, and Settlement on a regular basis through the course of ED2 to ensure market competition in this area.



# QUESTIONS & ANSWERS



[flexible.contracts@enwl.co.uk](mailto:flexible.contracts@enwl.co.uk)



[www.enwl.co.uk/gonetzero](http://www.enwl.co.uk/gonetzero)



0800 195 4141



[facebook.com/ElectricityNorthWest](https://facebook.com/ElectricityNorthWest)



[linkedin.com/company/electricity-north-west](https://linkedin.com/company/electricity-north-west)



[@ElecNW\\_News](https://twitter.com/ElecNW_News)



[youtube.com/ElectricityNorthWest](https://youtube.com/ElectricityNorthWest)

Please contact us if you have any questions or would like to arrange a one-to-one meeting



**electricity**  
**north west**

Bringing energy to your door

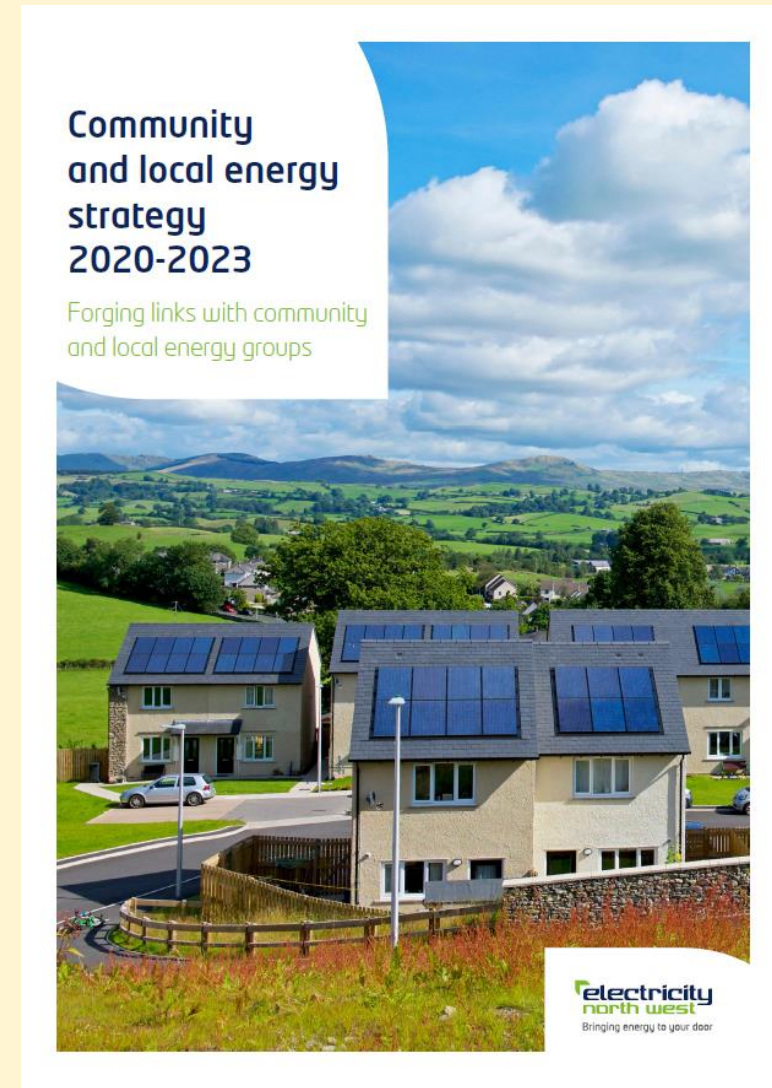
# Helen Seagrave

Community Energy Manager



# Our support for community and local energy

- Dedicated point of contact
- Strategy and action plan
- Funding
- Leading by example



# Community energy in the North West



**42  
Groups**

**17MW**

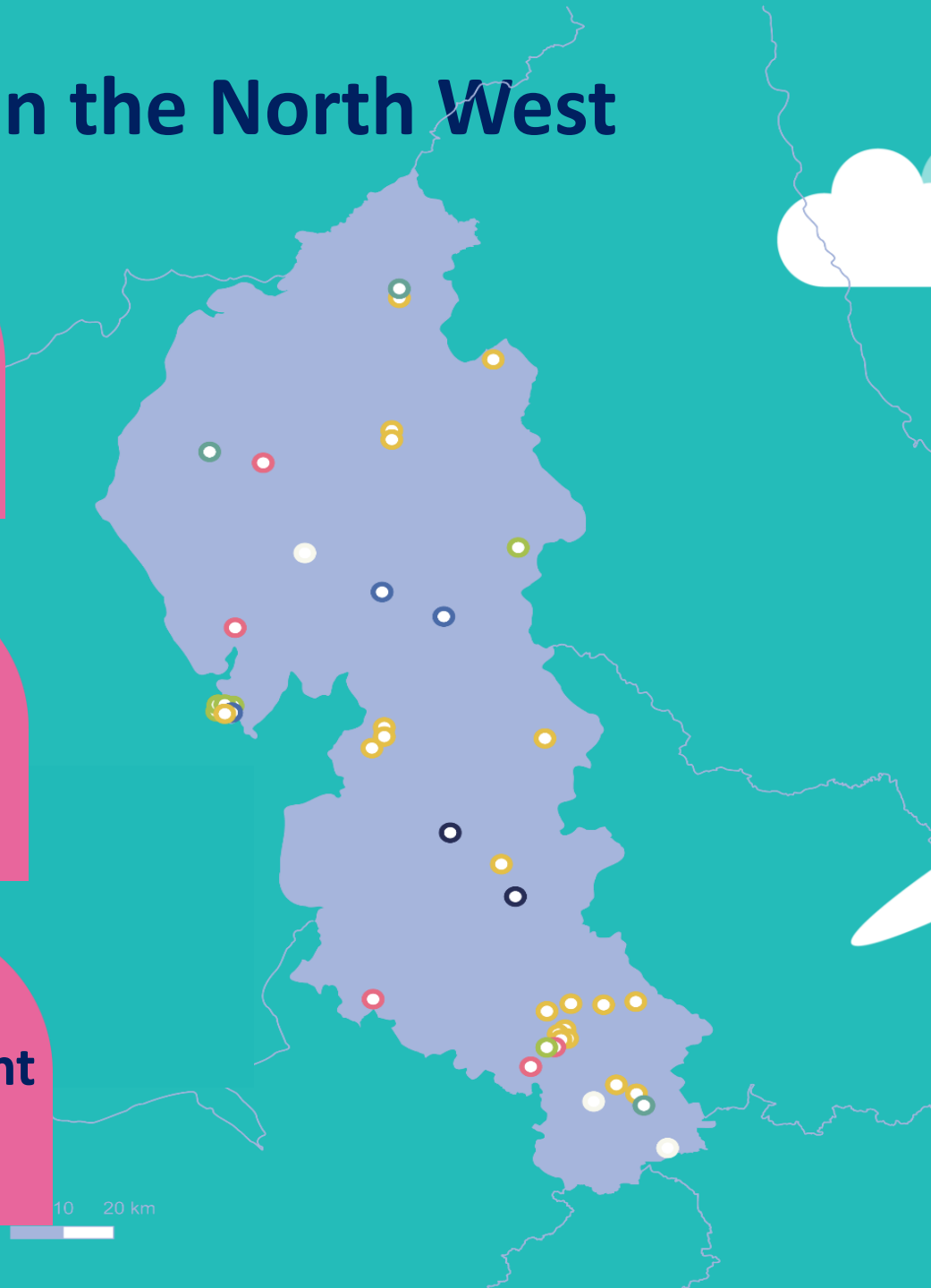
**74 new  
EV charge  
points**

**42 FTE**

**£611K  
develop  
funding**

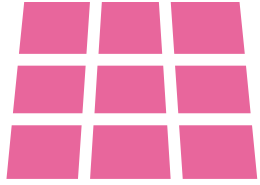
**£1m  
investment  
raised**

10 20 km

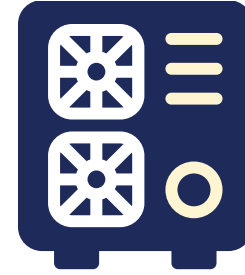




# Types of community energy projects



2.6 MW PV  
3 MW Hydro  
11.5 MW Wind



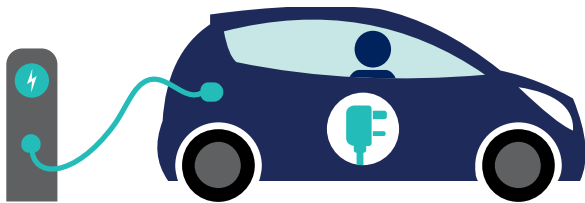
Only one 22 kW solar thermal system



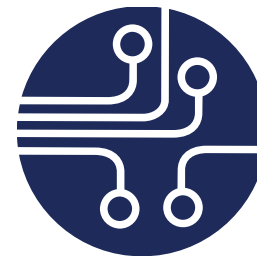
17 MW total



8 organisations  
Building Improvements  
Advice and Audits




109 EV charge points




No community energy businesses yet to take part in flexibility services

# Cumbria



**19 groups**



**15.54MW installed capacity**



Brampton 2 Zero  
Brampton and Beyond Energy

Alston Moor  
Community Energy

Community Energy  
Cumbria

Ambleside Action for  
a Future

Equality Homes – Kirby  
Stephens

Ellergreen Hydro  
Burneside Community  
Energy  
Killington Sustainable  
Energy (K-Set)

Sustainable Keswick

Melbreak Renewable Energy CIC

Sustainable Duddon

**Energy4All**  
Baywind Energy Coop  
Energy Prospects  
High Wind Community  
Energy Society  
Mean Moor Wind Farm  
Two Rivers Community  
Energy Society  
Raine Power

# Lancashire and North Yorkshire

Morecambe Bay Community Renewables

Halton and Lune Hydro

Charge My Street

 **8 groups**

 **384kW installed capacity**

Skelmersdale Community Energy Association



Settle Hydro

Chipping Community Land Trust

Whalley Community Hydro Ltd

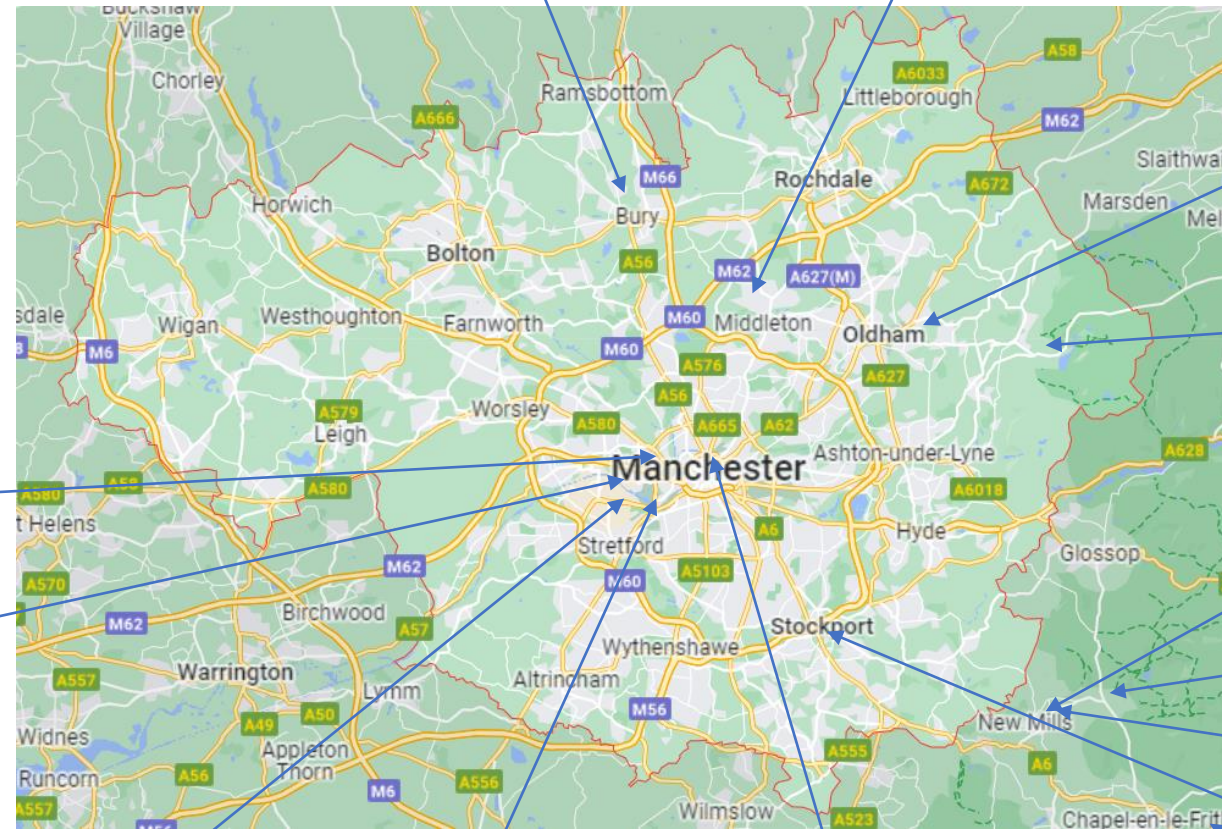
The Prospect Land Trust



# Greater Manchester and Derbyshire

 **15 Groups**

 **806kW**



Bee Sustainable

Middleton  
Community Power

Oldham  
Community  
Power

Saddleworth  
Community  
Hydro

Acclimatise  
Whaley

Sustainable  
Hayfield

Torrs Hydro

Stockport Hydro

Transition Buxton

Community Energy  
Greater Manchester

Greater Manchester  
Community Renewables

Trafford for Solar

St John's  
Sunshine

Carbon Coop

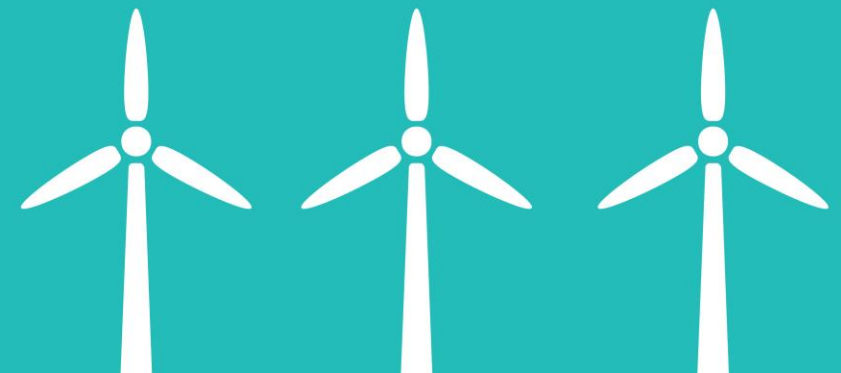
People Powered Retrofit

Community Energy  
Greater Manchester



## 27 community energy projects planned in 2022

- 13 electricity generation
- 4 low carbon transport
- 3 energy efficiency
- 2 energy storage
- 4 local supply



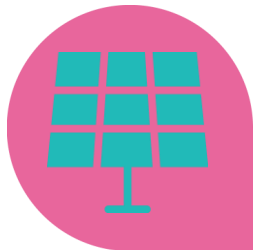
# Powering our Communities Fund criteria



Engaging communities to establish a group or scope a project



Addressing a specific barrier that is holding back the development of community or local energy



Scaling up delivery of a community or local energy project or group



# Powering our Communities Fund



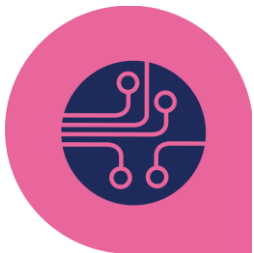
## Fund:

- £75,000 available
- £1,000 - £15,000 per project
- Deadline: 19<sup>th</sup> July 2022



## Who can apply?:

- Community energy groups or businesses
- Energy Cooperatives
- Any type of community organisations
- Environmental groups or organisations
- Parish Councils



## Eligible activity:

- Supporting staff time or technical expertise
- Buying equipment
- Researching a new approach/ business model

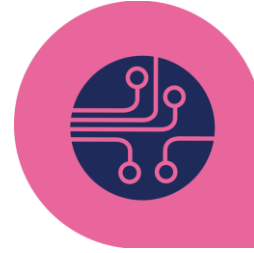


# Scaling up the delivering of community energy



## Energy Local CIC

- Starting the first Energy Local club in Cumbria
- Will link local households to a local hydro generator.



## Accelerating Community Solar

- Extending CAfS community solar project to new projects
- Supports householders to collectively purchase PV



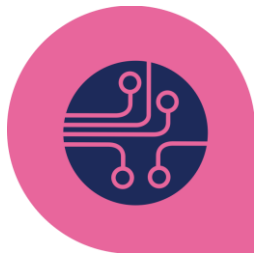
## Middleton Community Power

- Aim to establish a solar PV cooperative in Middleton
- Project will building capacity and knowledge in local people to enable them to start the group.



## Energise Sholver

- Expanding the group to include young people
- Identifying a project to develop building on the Oldham Energy Futures project

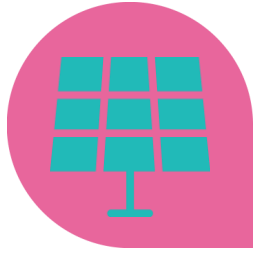


## Heat Pump Ready!

- Toolkit being developed for community energy groups to give advice on heat pumps
- Empowers new groups to give advice to households



# Addressing a specific barrier



## Solar for Salford

- Salford diocese led interfaith project to address barriers to religious buildings installing community energy owned assets;
- Will look at the business model for buildings with intermittent use patterns
- Alignment with cannon law and requirements of other religions



## Farming Futures

- CAfS working with a community of farmers in the Fellfoot area of Cumbria.
- It will investigate demand for, and viability of on farm renewables and unlock barriers to implementation.





## Keep up to date

Sign up for our newsletter

Visit the community and local energy section of our website

[www.enwl.co.uk/communityandlocalenergy](http://www.enwl.co.uk/communityandlocalenergy)



## Get in touch

If you are developing a community or local energy project  
please get in touch to discuss your plans



## Contact details

Helen Seagrave

Community Manager

[Communityandlocalenergy@enw.co.uk](mailto:Communityandlocalenergy@enw.co.uk)

