



Automated Transformer Monitoring System (ATMS)

Maurice Lynch – ENWL

Samir Alilat – Kelvatek

Stay connected...



www.enwl.co.uk

Electricity North West – background



Operate and maintain over
56,000km of network

2.4 million connections

Supply around 5 million customers

Diverse geographical area

Switched on, adaptable and take
pride in what we do





We're a trusted partner to leading energy operators across UK & Ireland



Our vision is to help build a smarter, more sustainable future through our highly accurate ability to target interventions and investment, all while minimising unplanned interruptions. Underpinning this is our industry-leading solutions and services for Fault & Load Management, Asset Monitoring and Biogas & Gas Monitoring.

What is ATMS?

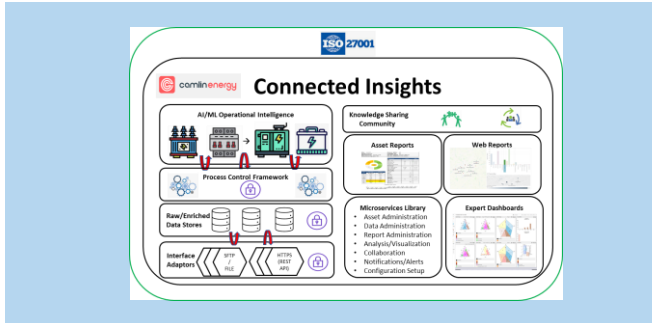


Hardware



TOTUS G9 detects and measures all critical fault gases as well as moisture in oil, providing a comprehensive DGA profile as well as in-depth insight with highly accurate trend analysis. For this project a Through Fault Current module has been added to provide enhanced data collection.

Software



Connected Insights collects and consolidates data providing a digital service to translate diagnostic data from both offline and online sources into prescriptive actions. It does this by utilising a number of digital models to assess the health of transformer assets.

Outputs



The data is provided by automated interface to ENW where CNAIM scoring is automatically produced to provide health rankings to aid and evidence asset investment programs



Work Packages

- WP1 Hardware Installation – **IN PROGRESS**
- Work Package 2 Data Management – **IN PROGRESS**
- WP3 Digital Transformer Reports with Advanced- Analytics – **AWAITING DATA COLLECTION**
- WP4 - Investigation on Transformer and Grid Digital Twins with advanced Machine Learning techniques – **AWAITING DATA COLLECTION**
- WP5 – Asset Management Integration – **IN PROGRESS**



Upgrades of existing TOTUS V1 units

Installation of Through Fault Current modules

Installations & Upgrades taking place now to enable enhanced data collection to feed transformer AI/ML models.

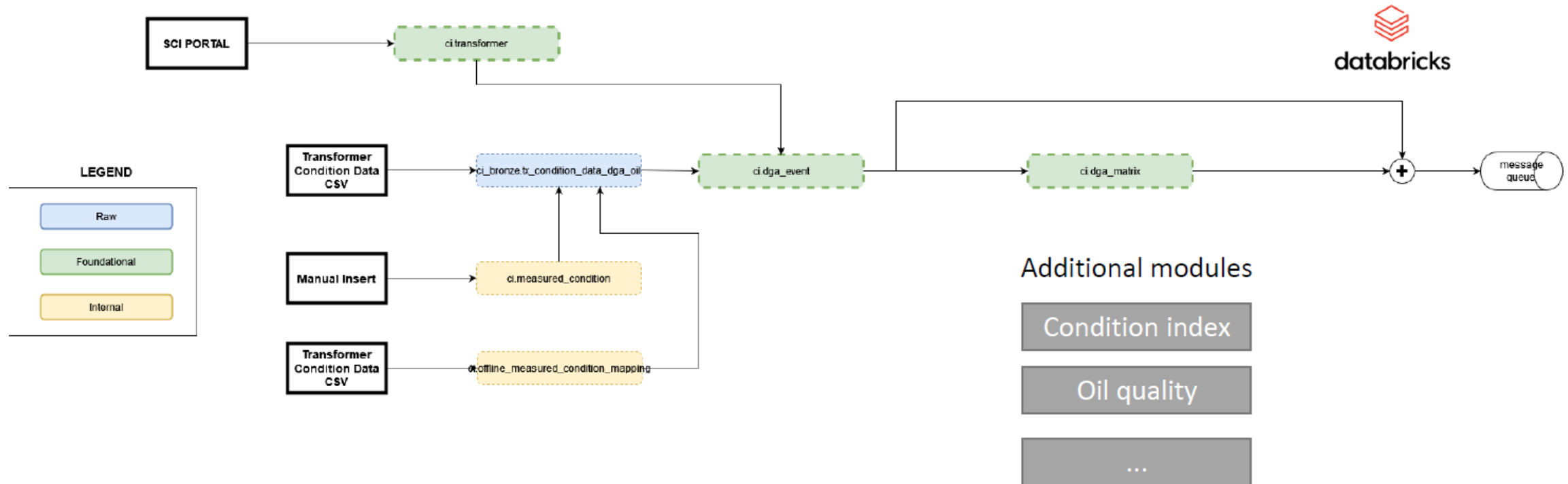
WP2 data management



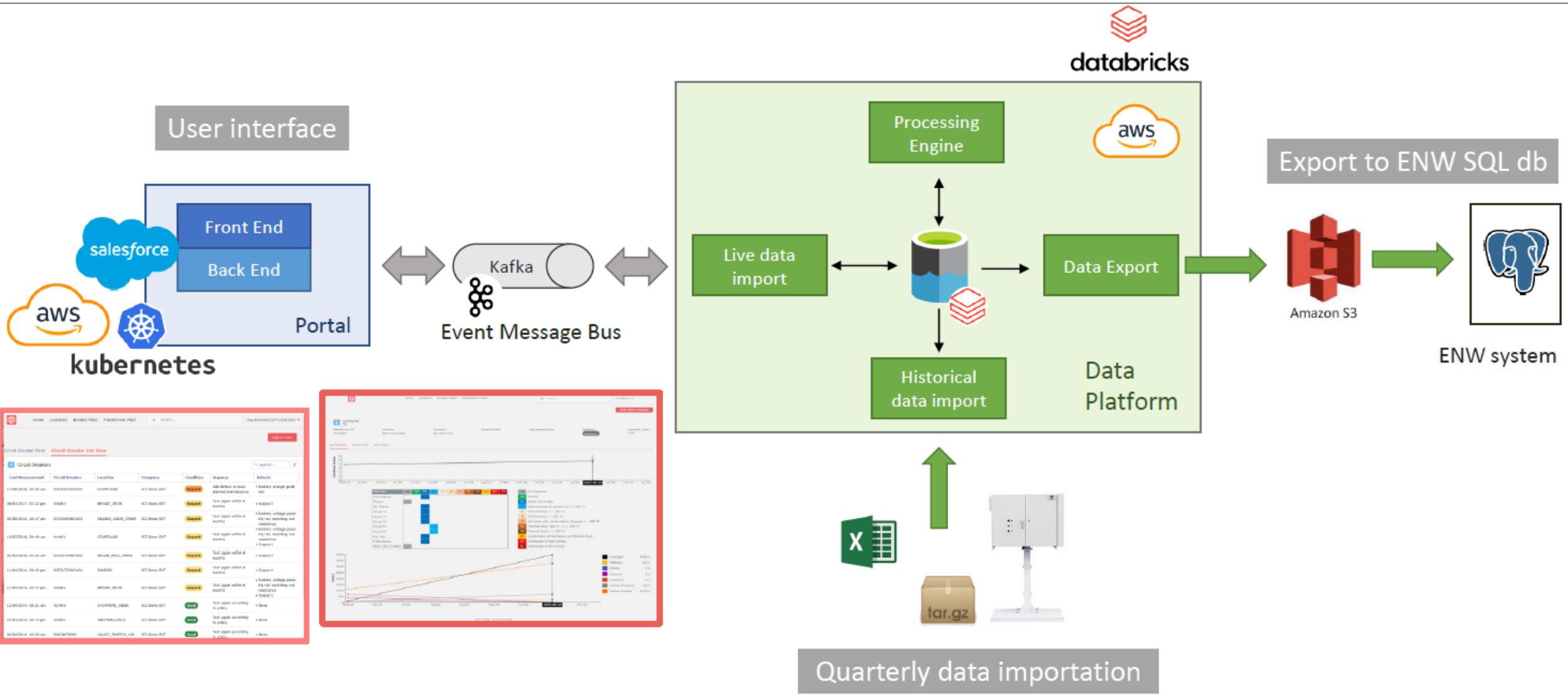
Creation of data framework for transformer models

Data catalogues defined and importation criteria specified

Importation of historically collected data



Final architecture



Circuit Breaker ID	Circuit Breaker	Location	Company	Condition	Support	Details
17892014_01-01-01	100000000000	1000000000	1000000000	Warning	Warning	Warning
1892014_02-02-02	2000000000	2000000000	2000000000	Warning	Warning	Warning
1992014_03-03-03	3000000000	3000000000	3000000000	Warning	Warning	Warning
2092014_04-04-04	4000000000	4000000000	4000000000	Warning	Warning	Warning
2192014_05-05-05	5000000000	5000000000	5000000000	Warning	Warning	Warning
2292014_06-06-06	6000000000	6000000000	6000000000	Warning	Warning	Warning
2392014_07-07-07	7000000000	7000000000	7000000000	Warning	Warning	Warning
2492014_08-08-08	8000000000	8000000000	8000000000	Warning	Warning	Warning
2592014_09-09-09	9000000000	9000000000	9000000000	Warning	Warning	Warning
2692014_10-10-10	10000000000	10000000000	10000000000	Warning	Warning	Warning
2792014_11-11-11	11000000000	11000000000	11000000000	Warning	Warning	Warning
2892014_12-12-12	12000000000	12000000000	12000000000	Warning	Warning	Warning
2992014_01-01-13	13000000000	13000000000	13000000000	Warning	Warning	Warning
3092014_02-02-13	14000000000	14000000000	14000000000	Warning	Warning	Warning





Advanced Analytics

1. Hot Spots
2. Losses
3. Predicted Top Oil temperature
4. Moisture in cellulose
5. Bubbling temperature
6. Ageing speed and accumulated ageing
7. Overloading capabilities
8. Oil Break Down Voltage.

Investigation of AI/ML Models

Model 1: Network Interaction

Model 2: Anomaly Detection

Model 3: Failure Probability Matrix

Model 4: Failure Mode Model

Model 5: Intervention & Maintenance

Model

QUESTIONS & ANSWERS



innovation@enwl.co.uk



www.enwl.co.uk/innovation-strategy



0800 195 4141



[@ElecNW_News](https://twitter.com/ElecNW_News)



[linkedin.com/company/electricity-north-west](https://www.linkedin.com/company/electricity-north-west)



[facebook.com/ElectricityNorthWest](https://www.facebook.com/ElectricityNorthWest)



[youtube.com/ElectricityNorthWest](https://www.youtube.com/ElectricityNorthWest)

Please contact us if you have any questions or would like to arrange a one-to-one briefing about our innovation projects