

Incentive on Connections Engagement (ICE)



Contents

Events	3
.....	
Launching our new website	3
.....	
Register for policy updates	3
.....	
Community Energy	3
.....	
Expanding our Infrastructure Solutions team	4
.....	
Owner-Operator panel	4
.....	
Not sure who to contact?	4
.....	
Managing capacity	4
.....	
Railway crossing	5
.....	
Audit performance statistics	5
.....	
Our GIS is changing shape	5
.....	

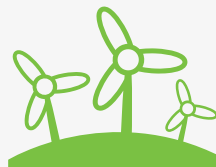
Autumn Update

Welcome to our second 2017-18 connections newsletter, keeping you up to date on our latest news and updates from our Incentive on Connections Engagement (ICE) Work plan.

View our plans!

Our plans were developed from the feedback you gave us in events and surveys over 2016 and to date in 2017. Our work plans are intended to be fluid, evolving over the year as we engage with stakeholders to make sure that we continue to focus on topics that are important to you.

There's still time to have your say! Take a look at our plans and tell us what you think.



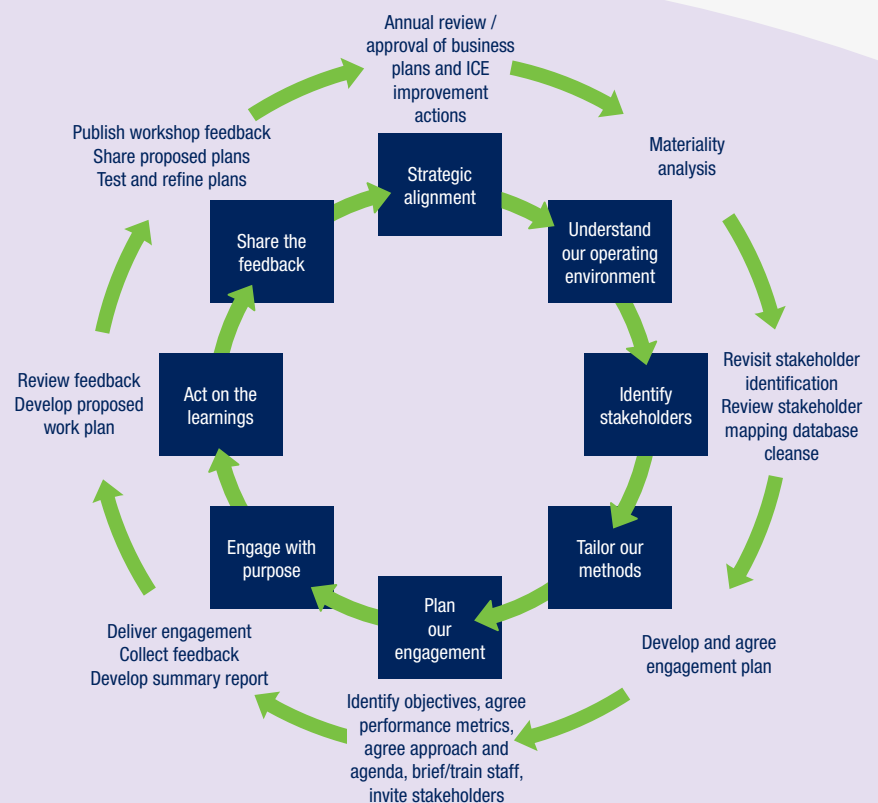
Distributed Generation
proposed work plan 2017-18



ICP/IDNO proposed
work plan 2017-18

“ Brian Hoy, Head of Market Regulation and Compliance

We're making significant changes to what we do and information we provide based on what stakeholders are telling us. It's good to see ICE bringing positive changes across all DNOs and that's why it's hugely important we continue to listen and stakeholders continue to actively engage with us. ”



Events

Some of our upcoming events include:



ENA DG Forum,
Birmingham



Community
Energy Conference,
Kendal Town Hall



Estates and wayleave
surgery, ENWL offices
Preston



ICP/IDNO workshop,
Wrightington Hotel,
Preston



DG workshop,
ENWL offices Preston

To register your place please reply to Rebecca.lees@enwl.co.uk

For our DG workshop on 31 October, we will be offering afternoon surgery sessions and a 'back-stage' tour of our control room for more information about our Network Management System. If you are interested in either of these please state this in your registration.

Keep up to date with all of our planned events and feedback on our [website](#).

Launching our new website

The final launch is delayed due to final testing but we are still working towards releasing the new website in autumn. Throughout the development process we have engaged with our DG and ICP/IDNO Expert Stakeholder Panels to help us build the navigation of the site, testing the user experience with them to make sure it delivers benefits to our wider stakeholders.

As part of our new website we're building new functionality to make it easier and faster for you to find the information you need and apply online. However, for those who still wish to use ENA application forms or our own pdf application forms these will still be available on the website.



Policy Updates

Want to keep up to date with our changes to policy? [Register today](#) for our policy newsletter updates.

Community Energy

We are proud to be sponsoring this year's Cumbria Green Build Festival: Transforming Energy in Cumbria Conference on 22 September, where Cara Blockley, Central Services Manager will be presenting our view of the future of energy distribution alongside speakers from Tesla, Renew Wales, Quantum Strategy and Technology and James Cropper plc.

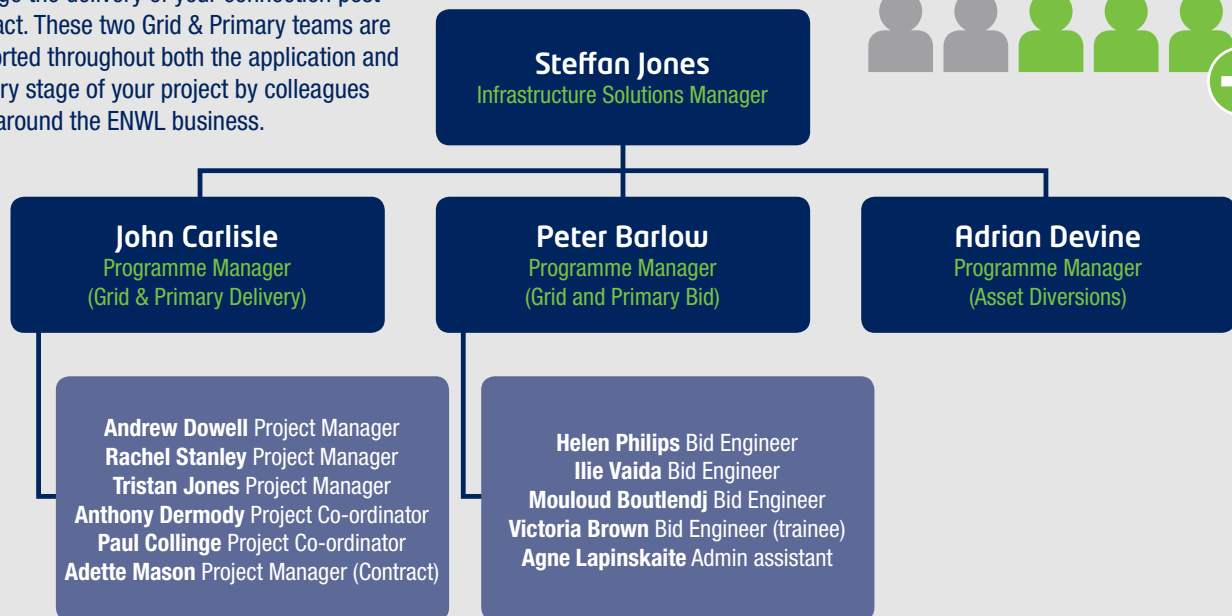
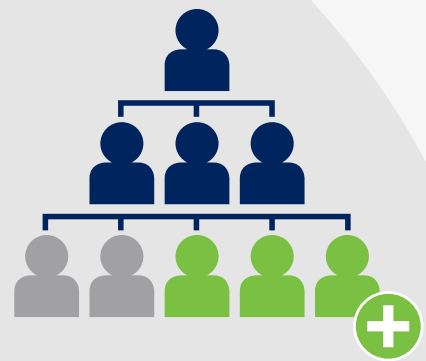
Find out more and **register** for your place, today!

We've listened to feedback from community groups and have recently recruited a Community Energy Manager to champion community energy within our area, liaise directly with community groups and facilitate support to community driven schemes.

We are hosting community energy events in November to introduce our new Community Energy Manager and to seek feedback on our Community Energy Strategy. To get involved and find out more, please email Rebecca.lees@enwl.co.uk

Expanding our Grid & Primary team

In response to the ever increasing volume of large scale connections applications and active connection schemes we have recently restructured and expanded the Grid & Primary team within Infrastructure Solutions. We have created two dedicated teams, one that will be responsible for your scheme from application through to acceptance and a second that will manage the delivery of your connection post contract. These two Grid & Primary teams are supported throughout both the application and delivery stage of your project by colleagues from around the ENWL business.



Owner-Operator panel

Are you an owner or operator of a distributed generation plant? We're looking to work closer with our owner-operators on outages and other network related work that could affect your export.

Interested? [Get in touch](#) with us to find out more.

Not sure who to contact?



Last year we re-submitted our ICP/IDNO ICE work plan with an extra action specifically based on feedback we had in our October workshop. You told us that knowing who to contact and having access to phone numbers/ email addresses would be helpful.

Check out our handy list of **contacts for day-to-day queries** you may have. Does this work for you? **Send us** your thoughts and feedback on our contacts list.

Thinking of applying for a distributed generation connection but want to ask some questions first? Get in touch and request a call back at generationenquires@enwl.co.uk

Managing capacity

Please note that if you are applying for a distributed generation quote, your connection will be subject to a number of termination **terms and conditions** associated with the progression of your project. As part of our commitment to manage capacity fairly for all connecting customers, we now request evidence of progression following acceptance of our Connection Offer. These new conditions are in line with the Energy Network Association (ENA) recommendations and intend to reduce the amount of capacity held by non-moving or slow moving projects for the benefit of the wider distributed generation community.

Railway crossing



Occasionally when designing a new point of connection the easiest or shortest route to join up with our network may appear to involve crossing a network rail asset (i.e. railway tracks or signalling equipment). However, to do so Network Rail requests a Basic Asset Protection Agreement (BAPA) to be signed. Unfortunately the liabilities associated with this agreement present an unacceptable risk to our business. Please note that whilst our legal team negotiate with Network Rail on these terms we will not agree to the BAPA.

This applies to all of our connection projects irrespective of type or size of connection. As far as is reasonably practicable, as a result of these terms, all of our connections are designed and delivered without crossing Network Rail assets.

Independent Connection Providers can choose whether to avoid Network Rail assets in their designs. If they choose not to do so, they will be required to agree to the same liabilities in the BAPA but must also negotiate an acceptable access regime for us to adopt those assets after installation.

To find out more about our policy on this topic please [email](#) us.

Our GIS is changing shape

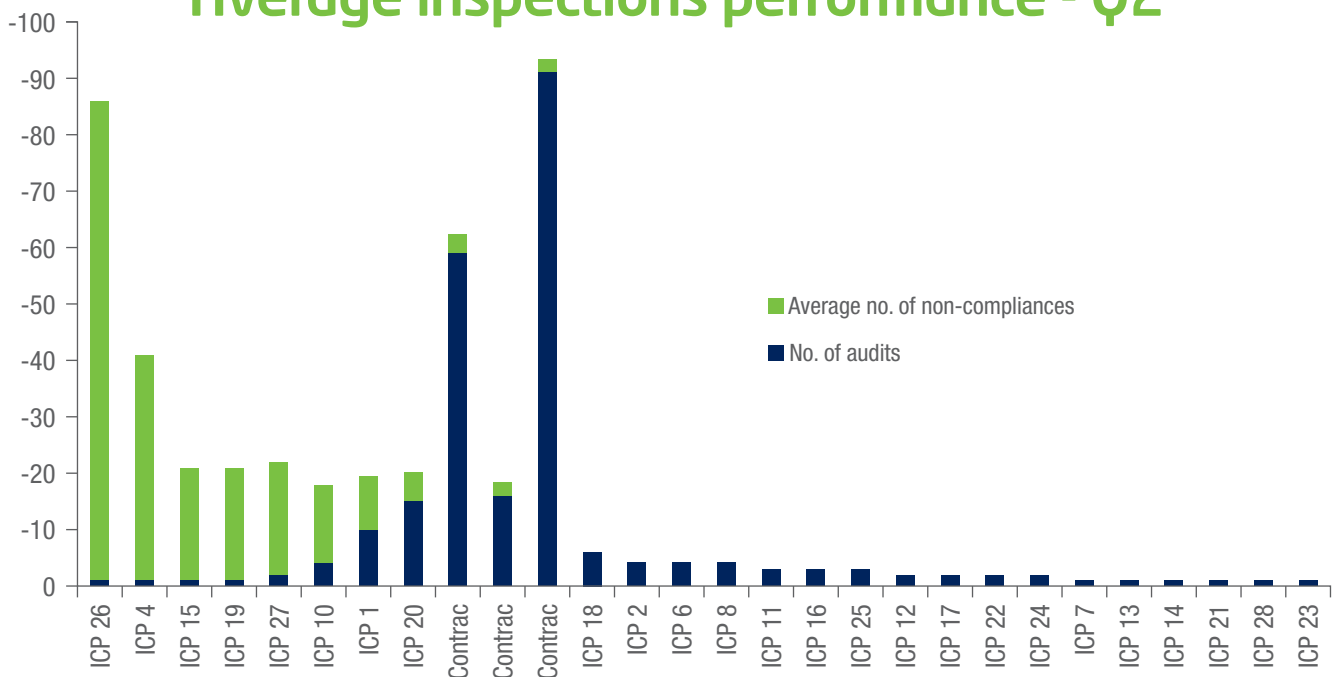
Our regular monthly **GIS** download will be changing format in October 2017. If you are registered to receive these updates we will still send you a link to download our data. However the download will exclude mapping background which means it'll be smaller and possibly quicker to download. We now recommend those using this data to load into **QGIS**, a free, open source online tool where you can configure your own mapping background to accompany our data.

If you haven't already registered to receive our GIS data, [register today](#) to receive your copy.

Audit performance statistics

We've committed to being open about our audit inspection performance scoring across our contractors and ICPs. Below shows our scores for Quarter 2 2017-18 where the average number of non-conformities identified in inspections, is represented alongside number of audits.

Average inspections performance - Q2





Bringing energy to your door

Electricity North West Limited

Registered Office:
304 Bridgewater Place
Birchwood Park
Warrington
Cheshire
WA3 6XG

Registered no: 2366949 (England)



Stay connected... www.enwl.co.uk |

