

Policy Newsletter

December 2025

Rosemary Roberts

Policy updates

Major policy updates

Ref	Issue	Title
CP411 Pt 1	Iss_24	LV Cable Jointing Manual
CP421-5	Iss_18	Fault Work, Maintenance and Refurbishment of Overhead Lines – HV Mains Supported by Poles
ES281	Dec 25	SP ENW Approved Equipment List
ES400 J33	Iss_4	33kV Solid Insulated Cable Accessories

Major policy updates

CP411 Pt 1 – LV Cable Jointing Manual

Updates to Section 2 – Standard Techniques

Standard Technique 4 – Preparation of Consac Mains Cables

- Statement added forbidding use of any other tool to open sheath on a live cable.
- Information on Consac tool inspection added.
- Information on new cutting wheels (unpainted) added.
- Information on cutting wheel gauge added.
- Commodity Codes for tools and solders added.
- Additional information on achieving correct depth of cut added.
- Additional information on plumbing solder stick to sheath added.

Standard Technique 8 – Resin Handling and Joint Shells

- New compostable bale bags added.

Updates to Section 3 – Jointing Instructions

MT1 Waveform 3c Poletop Termination Issue 5

MT2. Waveform 4c Poletop Termination Issue 5

References to the 161161-bolt pack for 185mm² cables on kits supplied from December 2025 have been removed from both documents.

CP421-5 – Fault Work, Maintenance and Refurbishment of Overhead Lines – HV Mains Supported by Poles

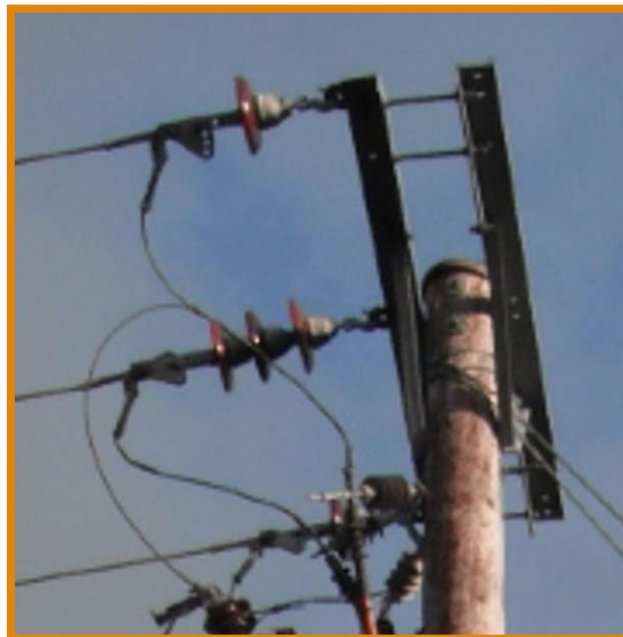
Internal Use

Updates to Section 5.13.1 General

- Changes to emphasise that **only unsecured barbed-wire wrap requires securing with cable ties.**

Updates to Sections 6.5 Crossarms (including Ancillary Steelwork) and 6.6 Insulators (Including Helical Ties)

- Sections updated to include further refurbishment interventions for faults that have occurred due to conductors clashing on narrow, light duty crossarms.
- Porcelain disc insulators should be replaced with polymeric insulators.
- Appendix A has been removed as all information is available in Sections 6.5 and 6.6.



ES281 – SP ENW Approved Equipment List

The SP ENW Approved Equipment List has been updated to include the following items:

Lucy 600A CT metering Assembly (Switchgear Tab)

Item 1 requested to be reinstated by Design Engineers for connections for use on temporary supplies as the BEMCO MOD 156 units would introduce touch potential between the steel MOD, the consumers earth rod and subsequent metal cabinet.

Ritherdons RB range of metallic enclosures (Substation Tab)

Item 2 requested by RLM designers as the units that are already approved in COP aren't really suitable for the building due to the size of them. Ritherdon make some smaller ones (RB range) which are suitable for our projects, but these don't show as approved but they have said that ENW have used them before.

ES400 J33 – 33kV Solid Insulated Cable Accessories

Section 5.15.2: XLPE-Insulated Cables

- Update of the size range of terminations and joints to cover polymeric cables up to (and including) 1000mm² cross sections.

Section 5.14: 33kV Cable Terminations

- Removal of Heat Shrink as an option for termination.
- Appendices detailing the ranges required consolidated down to Appendix A for terminations and Appendix B for joints

