

# Electricity Specification 400A2

Issue 3      September 2021

## Anti-Climbing Devices



## Amendment Summary

ISSUE NO. DATE	DESCRIPTION
<b>Issue 3</b>	New template applied throughout.
<b>07/09/21</b>	Prepared by: D M Talbot  Approved by: Policy Approval Panel and signed on its behalf by Steve Cox, Engineering and Technical Director

## Contents

1	Introduction	5
2	Scope	5
3	Definitions	5
4	General Requirements for Approvals and Testing	6
4.1	Product not to be Changed	6
4.2	Electricity North West Technical Approval	6
4.3	Quality Assurance	6
4.4	Formulation	7
4.5	Identification Markings	7
4.6	Minimum Life Expectancy	7
4.7	Product Conformity	7
4.8	Confirmation of Conformance	7
5	Requirements for Type and Routine Testing	8
5.1	Requirement for Type Tests at Suppliers Premises	8
5.2	Requirement for Routine Tests at the Supplier's Premises	8
6	Constructional Requirements	8
6.1	Steelwork	8
6.2	Steelwork Finish	8
6.3	Barbed Wire	8
6.4	Wire Staples	8
7	Documents Referenced	9
8	Keywords	10
	Appendix A – Schedule of All ACDs	11
	Anti Climbing Device, H-Pole Kit (Pole Centres 1830mm) – CC Number 133519	17
	Anti Climbing Device, H-Pole Kit (Pole Centres 2500mm) – CC Number 133520	17
	Anti-Climbing Device, Steel Tower Kit, Leg Sizes up to and Including 250mm x 250mm, C/W Spacer Bars and Fittings – KIT CC Number 133507	24
	Anti-Climbing Device, Steel Tower Kit with Cranked Crossarms, Leg Sizes up to and Including 250mm x 250mm, C/W Spacer Bars and Fittings – KIT CC Number 133516	30
	Anti-Climbing Device, Steel Tower Kit, Wide Based Tower, C/W Spacer Bars and Fittings – KIT CC Number 133508	43
	Appendix B – Conformance Declaration	48

All Rights Reserved

The copyright of this document, which contains information of a proprietary nature, is vested in Electricity North West Limited. The contents of this document may not be used for purposes other than that for which it has been supplied and may not be reproduced, either wholly or in part, in any way whatsoever. It may not be used by, or its contents divulged to, any other person whatsoever without the prior written permission of Electricity North West Limited.

## 1 Introduction

This Specification comprises general requirements for Approvals and testing of anti-climbing devices (ACDs), followed by technical particulars relating to the constructional requirements of all ACDs, and the markings that shall be applied to all ACDs prior to delivery. [Appendix A](#) is a schedule of all ACDs in alphanumeric order, followed by associated drawings (in drawing number order).

## 2 Scope

This Specification covers all anti-climbing devices employed within Electricity North West Limited (hereinafter referred to as Electricity North West).

## 3 Definitions

<b>ACD</b>	Anti-climbing device
<b>Approval</b>	Sanction by the Electricity North West Overhead Line Circuits Policy Manager that specified criteria have been satisfied
<b>Contract</b>	The agreement between Electricity North West and the Contractor for the execution of the Works including therein all documents to which reference may properly be made in order to ascertain the rights and obligations of the parties under the said agreement.
<b>Contractor</b>	The person or person's firm or company, including personal representatives, successors and permitted assigns, who's Tender has been accepted by Electricity North West.
<b>Specification</b>	The Specifications and schedules (if any) agreed by the parties for the purpose of the Contract.
<b>Sub-Contractor</b>	Any person (other than the Contractor) named in the Contract for any part of the Works or any person to whom any part of the Contract has been sub-let with the consent in writing of the Electricity North West Overhead Line Circuits Policy Manager, and the legal representatives, successors and assigns of such person.
<b>Supplier</b>	Any person or person's firm or company who supplies goods to Electricity North West or to its Contractor.

<b>Tender</b>	An offer in writing to execute work or supply goods at a fixed price.
<b>Tenderer</b>	The person or person's firm or company, including personal representatives, successors and permitted assigns, invited by Electricity North West to submit a Tender.

## 4 General Requirements for Approvals and Testing

### 4.1 Product not to be Changed

No change in the product, packaging or labelling shall be made after Approval has been granted without prior notice to the Electricity North West Overhead Line Circuits Policy Manager, and receipt of a written agreement to the proposed change from the Electricity North West Overhead Line Circuits Policy Manager.

### 4.2 Electricity North West Technical Approval

The Tenderer shall submit, with this Tender, proposals for testing which will demonstrate, to the satisfaction of the Electricity North West Overhead Line Circuits Manager, compliance with this Specification. Such tests shall be carried out without expense to Electricity North West.

Alternatively, technical reports and other data may be submitted that the Tenderer considers will demonstrate, to the satisfaction of the Electricity North West Overhead Line Circuits Policy Manager, compliance with this Specification. Acceptance of this evidence shall be at the discretion of the Electricity North West Overhead Line Circuits Policy Manager but will not be unreasonably withheld.

Approval shall be 'factory specific' and is not transferable to another factory without the written Approval of the Electricity North West Overhead Line Circuits Policy Manager.

The Supplier and product shall comply with all the relevant requirements of Electricity North West documents EPD311 and CP311.

### 4.3 Quality Assurance

The Tenderer shall confirm whether or not Approval is held in accordance with a quality assurance scheme accredited under ISO 9000. If not, the Tenderer shall submit a statement of the quality assurance procedures employed to control the quality of the product, including the performance of Suppliers and Sub-Contractors.

The right is reserved for the repeat of such tests, from time to time, that the Electricity North West Overhead Line Circuits Manager may deem to be reasonably necessary to demonstrate continued compliance with the Specification.

The Tenderer shall submit, with the Tender, a list of tests and inspections which are carried out on the product prior to despatch which shall demonstrate, to the satisfaction of the Electricity North West Overhead Line Circuits Policy Manager, fitness for installation and service.

The Tenderer shall provide free of charge to Electricity North West such samples as may, in the opinion of the Electricity North West Overhead Line Circuits Policy Manager, be reasonably required for inspection and/or

retention as quality control samples. The Electricity North West Overhead Line Circuits Policy Manager will confirm the requirement for samples at the time of Tendering.

The right is reserved for inspections to be made of Tenderer's facilities, from time to time, as deemed reasonably necessary by the Electricity North West Overhead Line Circuits Manager to ensure compliance with this Specification and any Contract of which it forms a part.

The Tenderer shall submit, with the Tender, such details of product packaging disposal, as will enable Electricity North West to comply with the requirements of BS EN ISO 14001 - Environmental Management Systems.

#### **4.4 Formulation**

The Tenderer shall submit, with the Tender, such details of the formulation and use of the product and associated substances as will enable Electricity North West to comply with the obligations of the Health and Safety at Work Act 1974 and the Control of Substances Hazardous to Health Regulations 2002, in the use, storage and disposal of the product. The Tenderer may stipulate, prior to submission of such information, that it is to remain confidential, and the Electricity North West Overhead Line Circuits Policy Manager will, if requested, confirm agreement to this prior to receipt of the information.

#### **4.5 Identification Markings**

The Tenderer shall submit, with the Tender, details of markings which it is proposed to apply to the product or packaging to identify manufacturing batches or items. The forms and content of such markings shall be subject to the Approval of the Electricity North West Overhead Line Circuits Policy Manager and shall in all cases include the Electricity North West approved description and commodity code number.

The Tenderer shall submit, with the Tender, such details of marking gross weight on components, assemblies and packages, as will enable Electricity North West to comply with the Health and Safety Manual Handling Operation Regulations 1992, for components, assemblies and packages supplied with a gross weight over 1kg. The forms and content of such markings shall be subject to the Approval of the Electricity North West Overhead Line Circuits Policy Manager.

#### **4.6 Minimum Life Expectancy**

The minimum life expectancy of all products covered by this Specification is 20 years.

#### **4.7 Product Conformity**

Preference will be given to those Suppliers who can provide suitable product conformity certification to a recognised or specified standard, or an equivalent certification.

#### **4.8 Confirmation of Conformance**

The Tenderer shall complete the conformance declaration sheets in [Appendix B](#). Failure to complete these declaration sheets may result in an unacceptable bid.

## 5 Requirements for Type and Routine Testing

The Electricity North West Overhead Line Circuits Manager shall set out the requirement of the following tests to be carried out by the Supplier at the Supplier's cost.

### 5.1 Requirement for Type Tests at Suppliers Premises

These are a series of one-off type tests, which are carried out to ensure the satisfactory performance of the product design, under extremes of operating stresses, and of endurance, as may be appropriate, to be determined by the Electricity North West Overhead Line Circuits Manager.

These may or may not be destructive tests.

### 5.2 Requirement for Routine Tests at the Supplier's Premises

These tests may be required to be carried out on every individual unit or component, as specified, or at some regular frequency to be determined by the Electricity North West Overhead Line Circuits Manager.

The results of these tests may be required to be supplied to Electricity North West with each unit purchased or retained for inspection, at a period to be determined by the Electricity North West Overhead Line Circuits Manager.

## 6 Constructional Requirements

### 6.1 Steelwork

ACD steelwork shall conform to all requirements of this Specification and the general requirements of ENA TS 43-95. Manufacturing tolerances shall be those given in ENA TS 43-95, unless otherwise stated.

### 6.2 Steelwork Finish

All steelwork shall be galvanized to BS EN ISO 1461. Galvanized steelwork shall be free from sharp edges or points left by the galvanization process.

### 6.3 Barbed Wire

Barbed wire shall generally be in accordance with ES400W4.

In areas where corrosion is severe, stainless-steel barbed wire may be used.

### 6.4 Wire Staples

Wire staples shall comply with BS 1494-1, and be of sufficient size to hold the barbed wire in place. Wire staples shall be galvanized to BS EN 10244-2.



## 7 Documents Referenced

DOCUMENTS REFERENCED	
<b>Control of Substances Hazardous to Health (COSHH) Regulations 2002.</b>	
<b>Health and Safety at Work Etc Act: 1974</b>	
<b>Health and Safety Manual Handling Operation Regulations 1992.</b>	
<b>BS EN ISO 1461:</b>	Hot dip galvanized coatings on fabricated iron and steel articles. Specifications and test methods.
<b>BS EN ISO 9000:</b>	Quality Management & Quality Assurance Standards.
<b>BS EN ISO 14001: 2004:</b>	Environmental management systems. Requirements with guidance for use.
<b>BS EN 10025:</b>	Hot rolled products of non-alloy structural steels. Technical delivery conditions.
<b>BS EN 10244-2:</b>	Steel wire and wire products. Non-ferrous metallic coatings on steel wire. Zinc or zinc alloy coatings.
<b>BS 1494-1:</b>	Specification for fixing accessories for building purposes. Fixings for sheet, roof and wall coverings
<b>ENA TS 43-90</b>	Anti-climbing devices and safety signs for lines up to and including 400kV.
<b>ENA TS 43-95:</b>	Steelwork for overhead lines.
<b>EPD311:</b>	Approval of Equipment.

<b>CP311:</b>	Equipment Approval Process.
<b>ES400F1:</b>	Specification for Fasteners and Washers for Wood Pole Overhead Lines.
<b>ES400W4:</b>	Barbed wire.

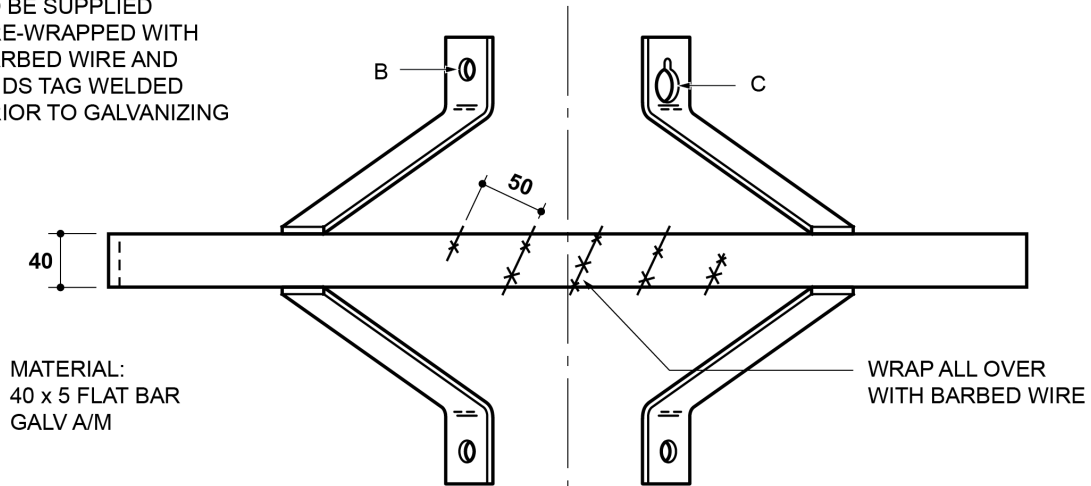
## 8 Keywords

ACD

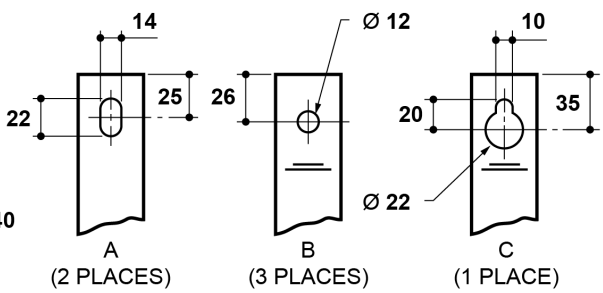
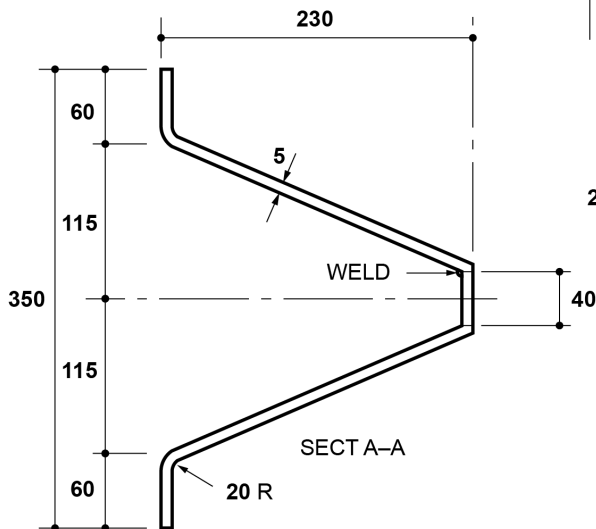
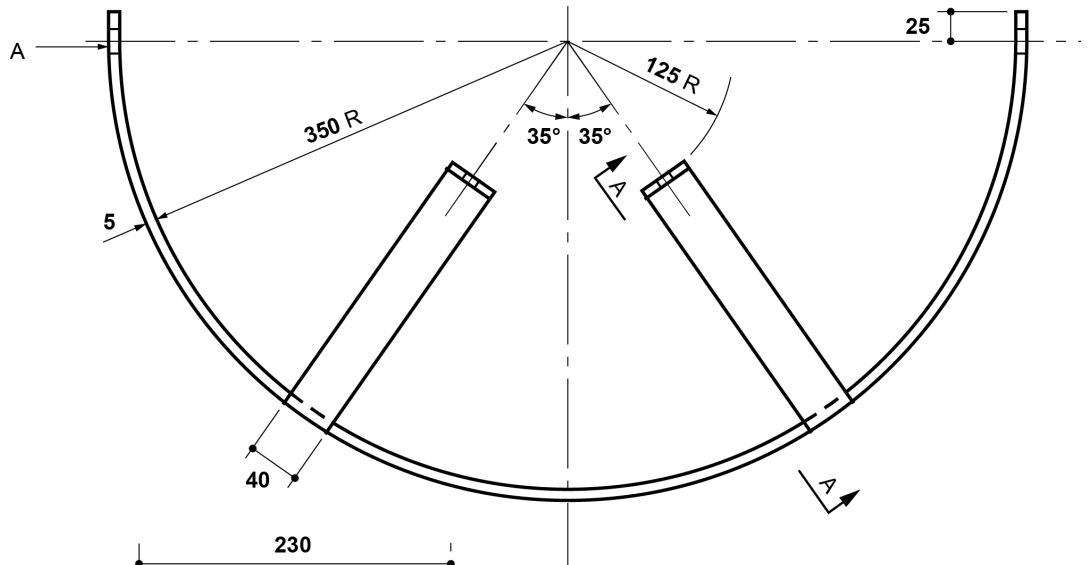
## Appendix A – Schedule of All ACDs

Item No	Approved Description (for purchasing and product labelling)	Drawing Reference	CC number
1	Anti-climbing device, half moon, wood pole, radius 350mm (Dwg I-400A2-ACD-001)	I-400A2-ACD-001	133620
2	Anti-climbing device, half moon, wood pole, radius 400mm (Dwg I-400A2-ACD-002)	I-400A2-ACD-002	133514
3*	Anti-climbing device, bracket, narrow based lattice steel tower/steel pole/concrete pole (Dwg I-400A2-ACD-004)	I-400A2-ACD-004	133517
4*	Anti-climbing device, bracket, 3 strand type (Dwg I-400A2-ACD-003)	I-400A2-ACD-003	133518
5	Anti-climbing device, fittings pack	Not applicable (refer to ES400F1)	133512
6	Anti-climbing device, H-pole kit (pole centres 1830mm) (Dwg I-400A2-ACD-005)	I-400A2-ACD-005	133519
7	Anti-climbing device, H-pole kit (pole centres 2500mm) (Dwg I-400A2-ACD-005)	I-400A2-ACD-005	133520
8	Anti-climbing device, spacer bar, 5-strand (short) (Dwg I-400A2-ACD-009)	I-400A2-ACD-009	133510
9	Anti-climbing device, spacer bar, 9-strand (long) (Dwg I-400A2-ACD-010)	I-400A2-ACD-010	133515
10	Anti-climbing device, steel tower gate hook (Dwg I-400A2-ACD-011)	I-400A2-ACD-011	133521
11	Anti-climbing device, steel tower kit, leg sizes up to and including 250mm x 250mm, c/w spacer bars and fittings (Dwg I-400A2-ACD-006)	I-400A2-ACD-006	133507
12	Anti-climbing device, steel tower kit with cranked crossarms, leg sizes up to and including 250mm x 250mm, c/w spacer bars and fittings (Dwg I-400A2-ACD-007)	I-400A2-ACD-007	133516
13	Anti-climbing device, steel tower kit, wide based tower, c/w spacer bars and fittings (Dwg I-400A2-ACD-008)	I-400A2-ACD-008	133508
* To be supplied with two stainless steel ties to Drawing I-400A2-ACD-012.			

TO BE SUPPLIED  
PRE-WRAPPED WITH  
BARBED WIRE AND  
ENDS TAG WELDED  
PRIOR TO GALVANIZING



MATERIAL:  
40 x 5 FLAT BAR  
GALV A/M

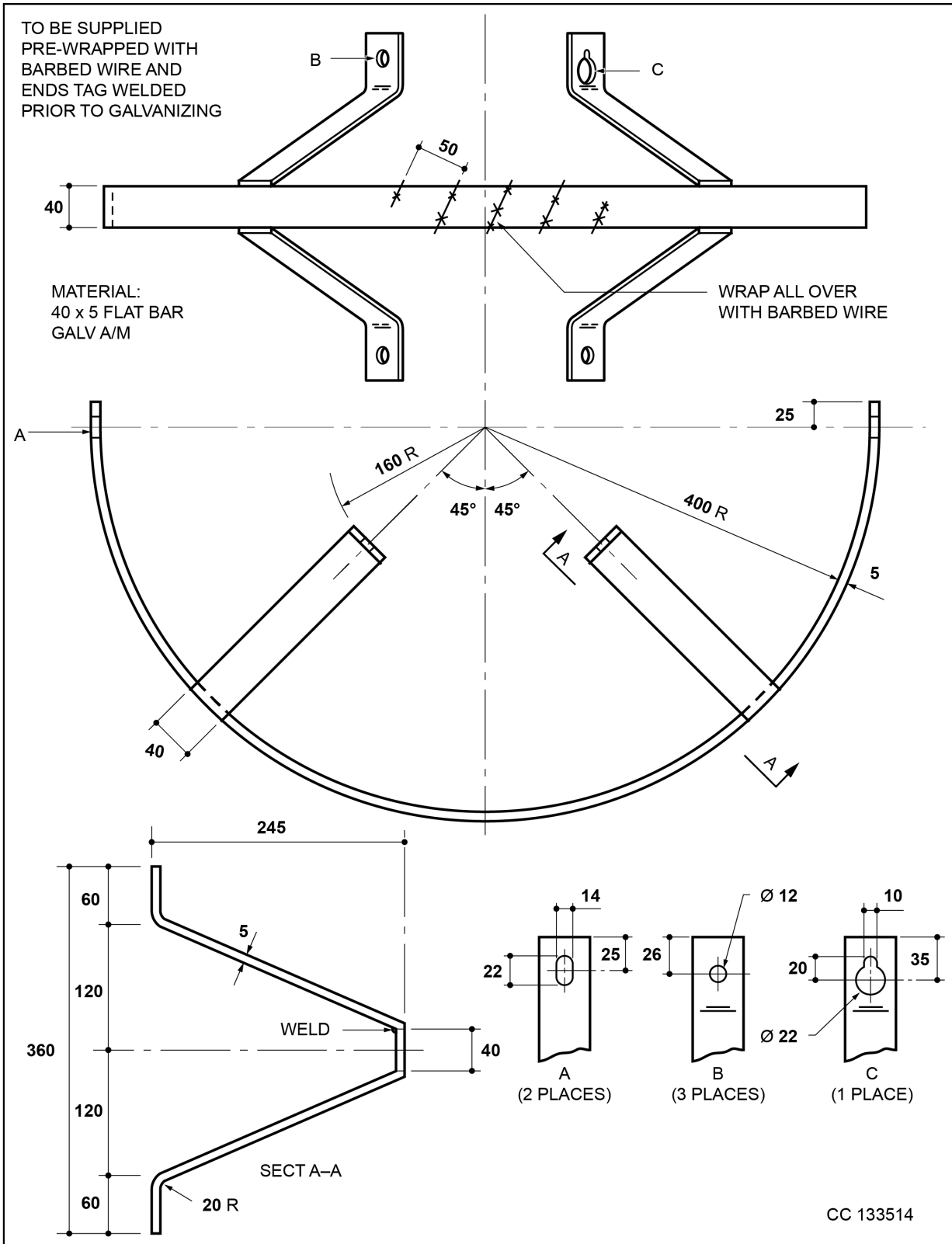


CC 133620

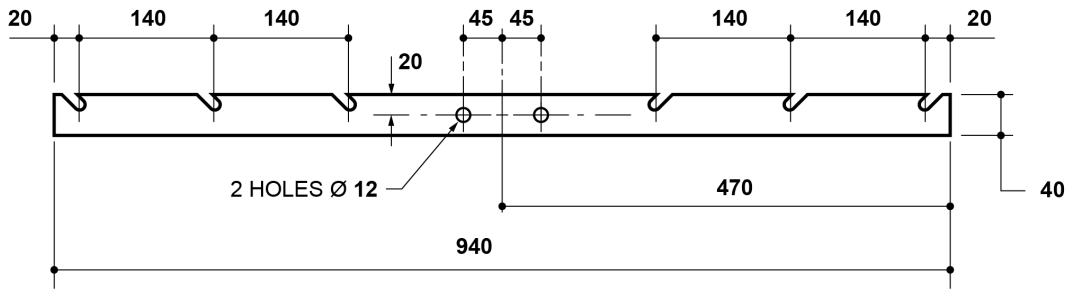
ANTI-CLIMBING DEVICE  
HALF MOON  
WOOD POLE  
RADIUS 350mm

Change information for this issue  
Requirement for pre-wrapping and  
tag welding stated

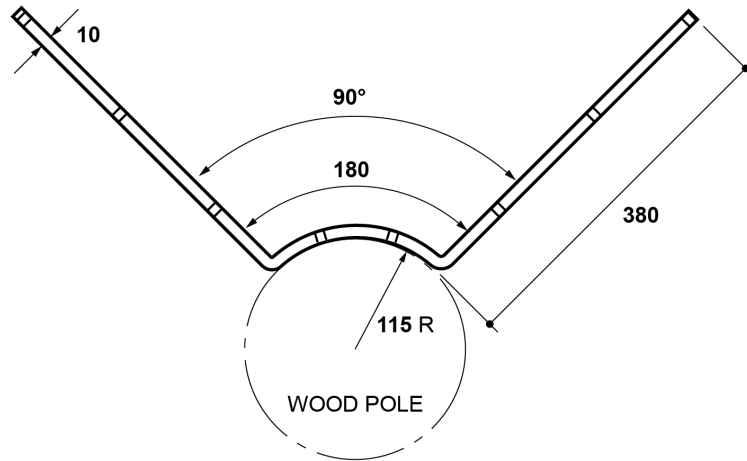
Appears in  
ES400A2



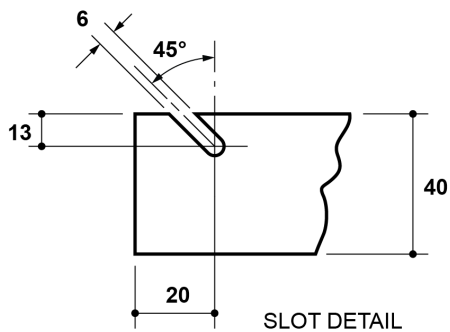
<p>ANTI-CLIMBING DEVICE HALF MOON WOOD POLE RADIUS 400mm</p>	<p>Change information for this issue Requirement for pre-wrapping and tag welding stated</p>	<p>Appears in ES400A2</p>	<p><b>Electricity north west</b></p> <p>I-400A2-ACD-002 Iss 2 sht 1 of 1 Scale: nts Auth: DMT Date: 27/11/2014</p>
--	--	-------------------------------	--



40 x 10 FLAT BAR  
PRIOR TO BENDING 2 OFF



BRACKET BENT TO SHAPE



SLOT DETAIL

CC 133518

ANTI-CLIMBING DEVICE  
BRACKET  
3 STRAND TYPE

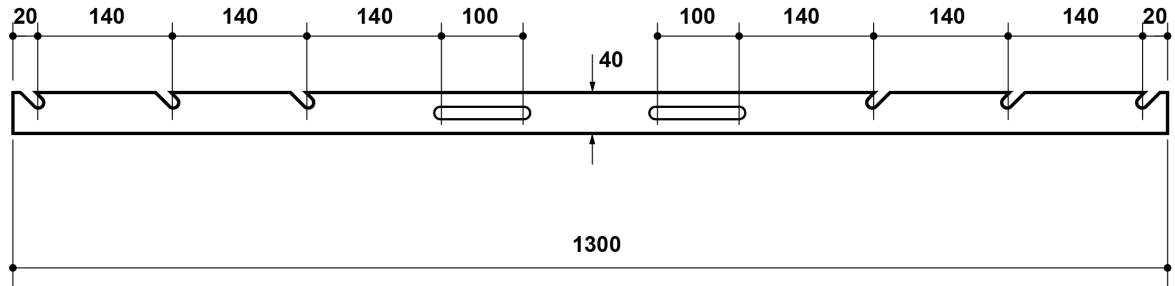
Change information for this issue  
N/A

Appears in  
ES400A2

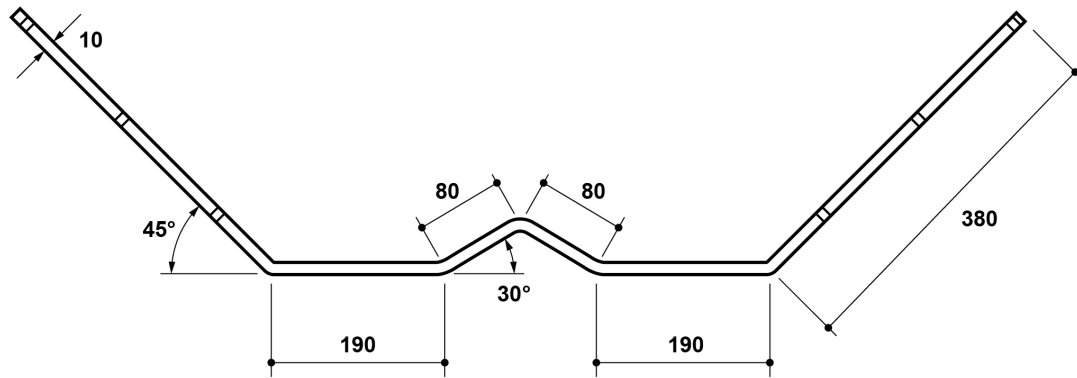
**electricity north west**

I-400A2-ACD-003 Iss 1 sht 1 of 1

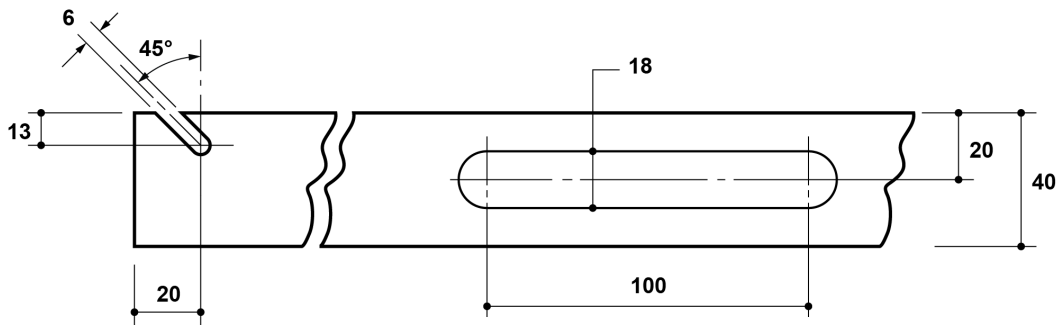
Scale: nts Auth: DMT Date: 16/02/2012



40 x 10 FLAT BAR  
PRIOR TO BENDING 2 OFF



BRACKET BENT TO SHAPE



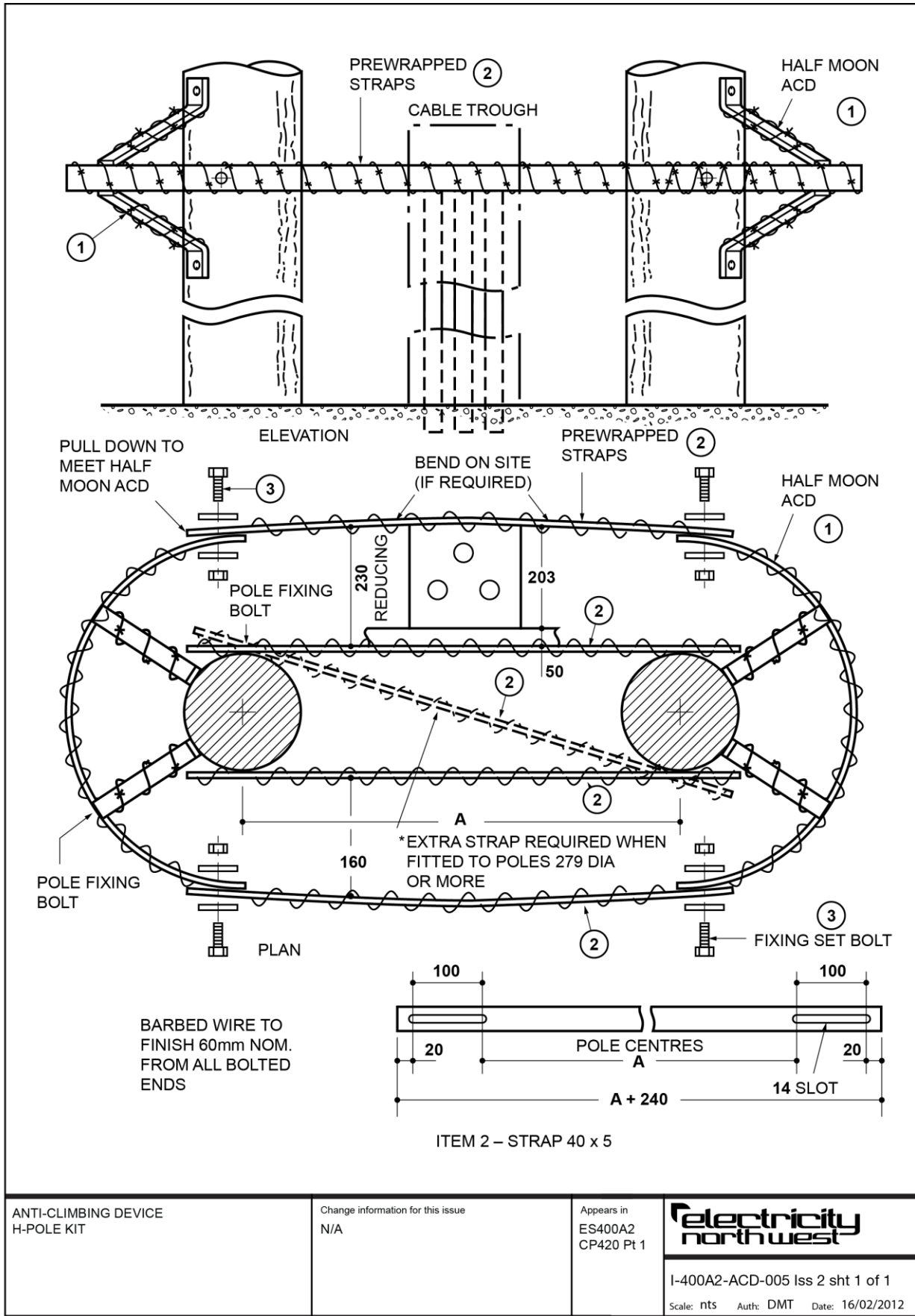
SLOT DETAIL

CC 133517

ANTI-CLIMBING DEVICE  
BRACKET  
NARROW BASED LATTICE STEEL TOWER/  
STEEL POLE/CONCRETE POLE

Change information for this issue

Appears in  
ES400A2





### Anti Climbing Device, H-Pole Kit (Pole Centres 1830mm) – CC Number 133519

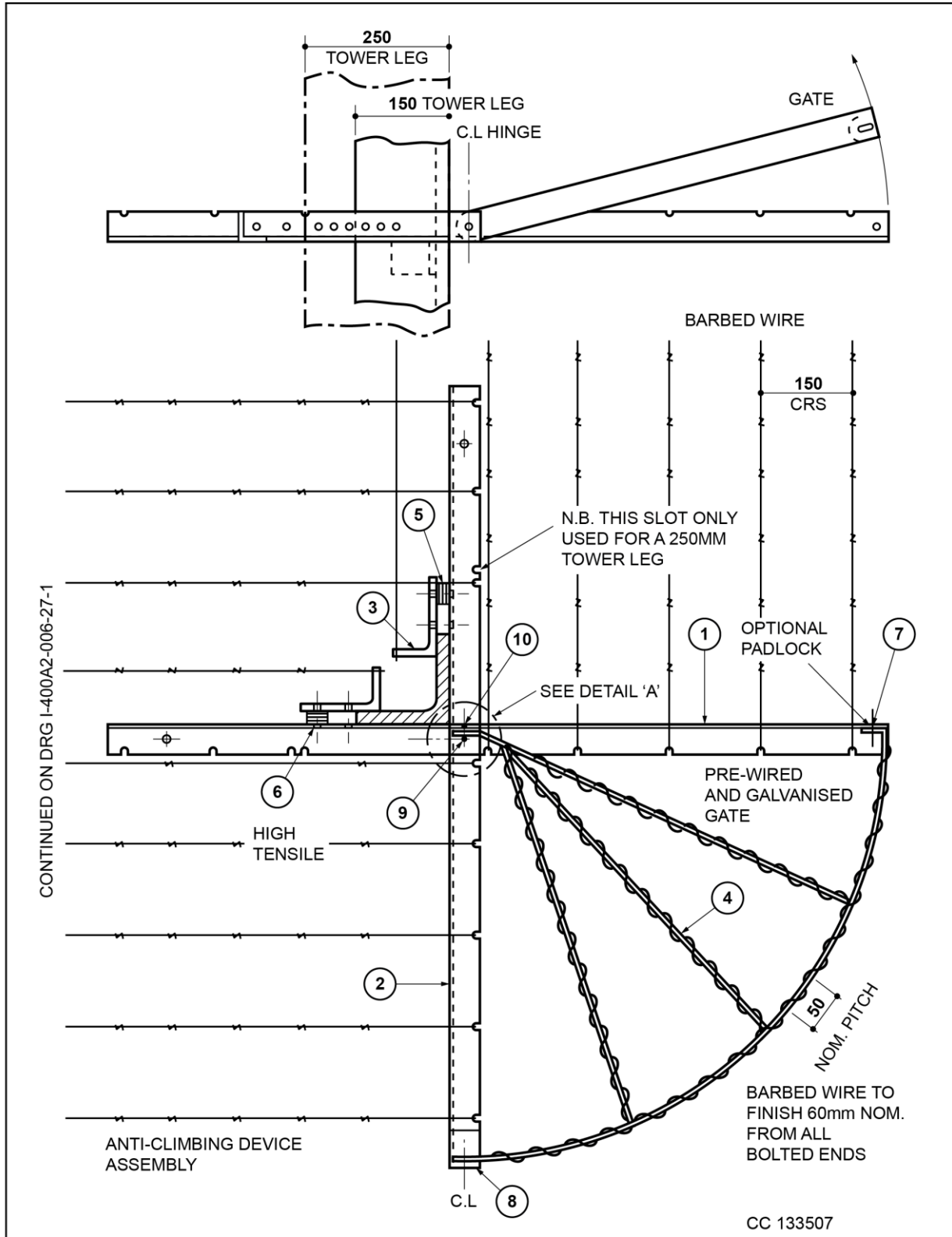
		Drawing No: I-400A2-ACD-005		
Item Number (refer to drawing)	Description	ES Ref No	CC number	Quantity
2	Strap (Dimension A = 1830mm)	-	-	3
3	M12 x 35mm bolt, c/w nut	-	-	4
3	M12 washer	-	-	8
(Additional Items Required for Kit - But Not Included in Kit Contents)				
-	Barbed wire Spacing: 150mm between strands (unsupported); 230mm unprotected space	ES400W4	197408	As req
1	Half moon ACD	ES400A2	(see Note)	2

**NOTE:** Appropriate half moon ACDs need to be selecting depending upon the pole sizes.

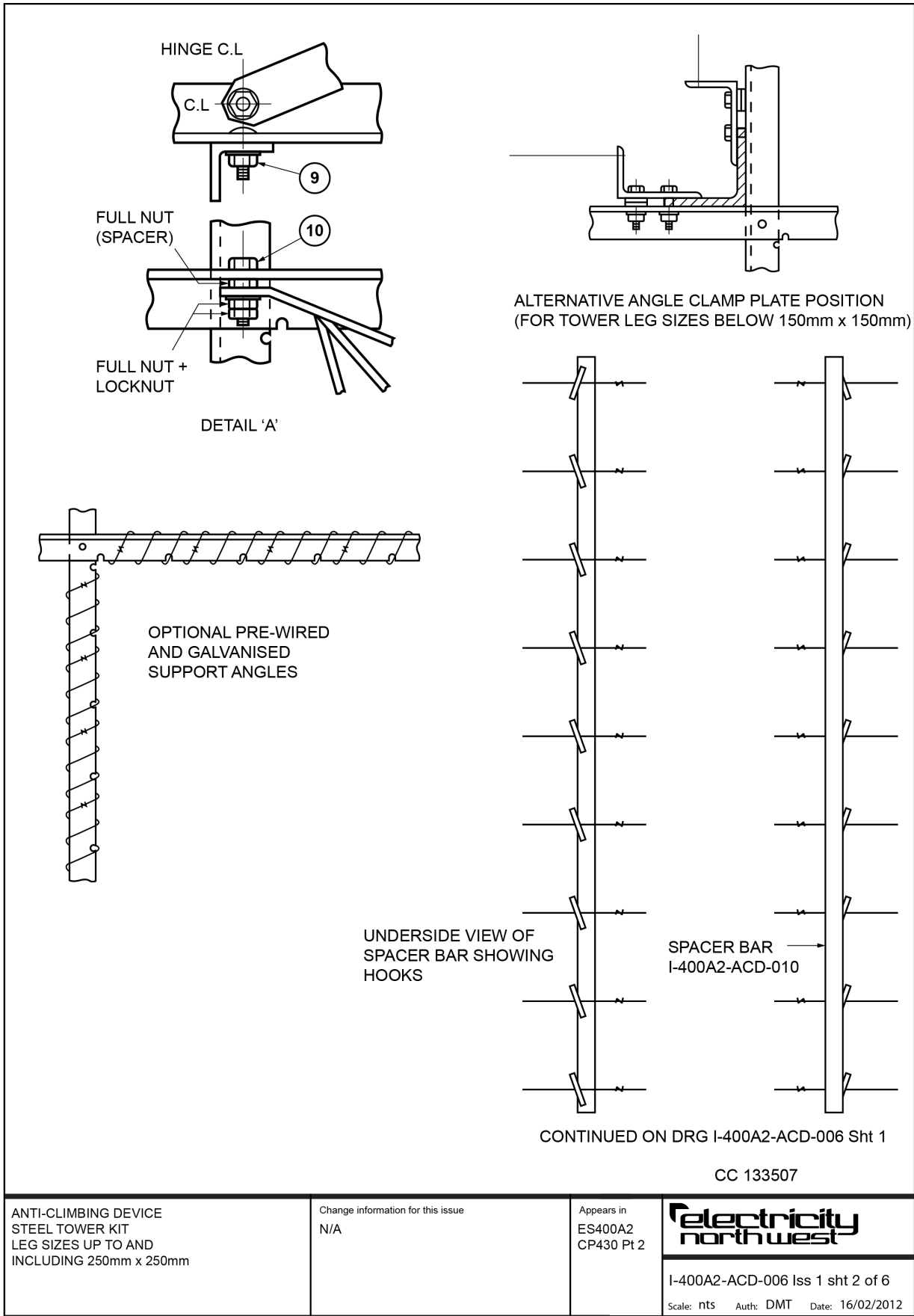
### Anti Climbing Device, H-Pole Kit (Pole Centres 2500mm) – CC Number 133520

		Drawing No: I-400A2-ACD-005		
Item Number (refer to drawing)	Description	ES Ref No	CC number	Quantity
2	Strap (Dimension A = 2500mm)	-	-	3
3	M12 x 35mm bolt, c/w nut	-	-	4
3	M12 washer	-	-	8
(Additional Items Required for Kit - But Not Included in Kit Contents)				
-	Barbed wire Spacing: 150mm between strands (unsupported); 230mm unprotected space	ES400W4	197408	As req
1	Half-moon ACD	ES400A2	(see Note)	2

**NOTE:** Appropriate half-moon ACDs need to be selecting depending upon the pole sizes.

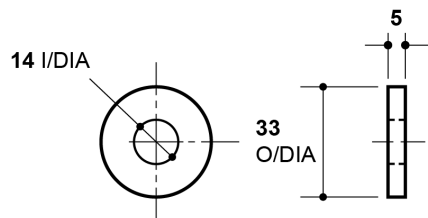
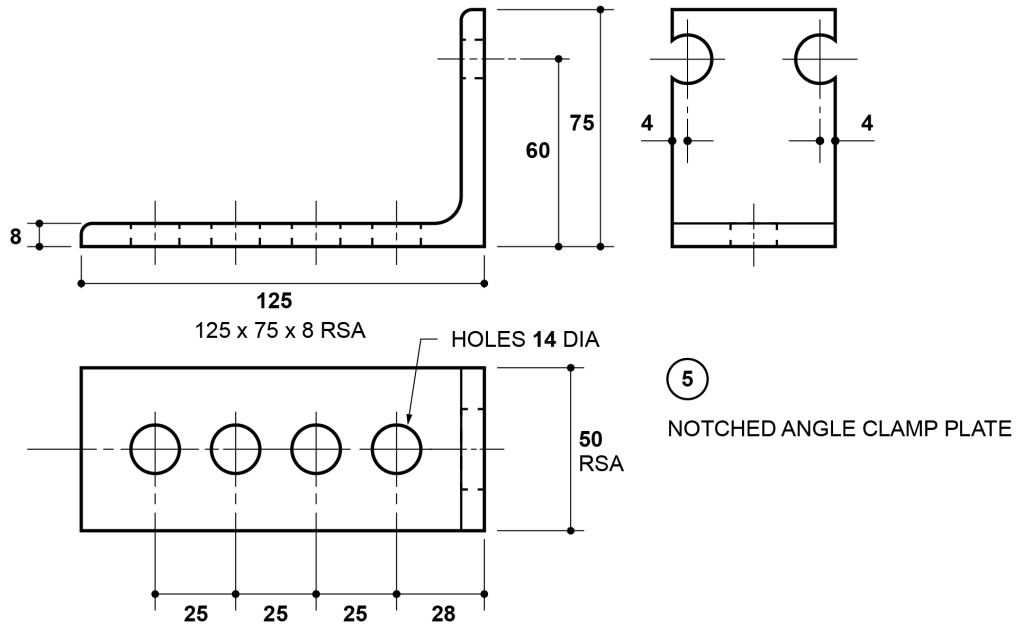


<p>ANTI-CLIMBING DEVICE STEEL TOWER KIT LEG SIZES UP TO AND INCLUDING 250mm x 250mm</p>	<p>Change information for this issue N/A</p>	<p>Appears in ES400A2 CP430 Pt 2</p>	<p><b>electricity north west</b></p> <p>I-400A2-ACD-006 Iss 1 sht 1 of 6 Scale: nts Auth: DMT Date: 16/02/2012</p>
---	--	--	--









3 5mm THICK GALVANISED PACK WASHER

CC 133507

ANTI-CLIMBING DEVICE  
STEEL TOWER KIT  
LEG SIZES UP TO AND  
INCLUDING 250mm x 250mm

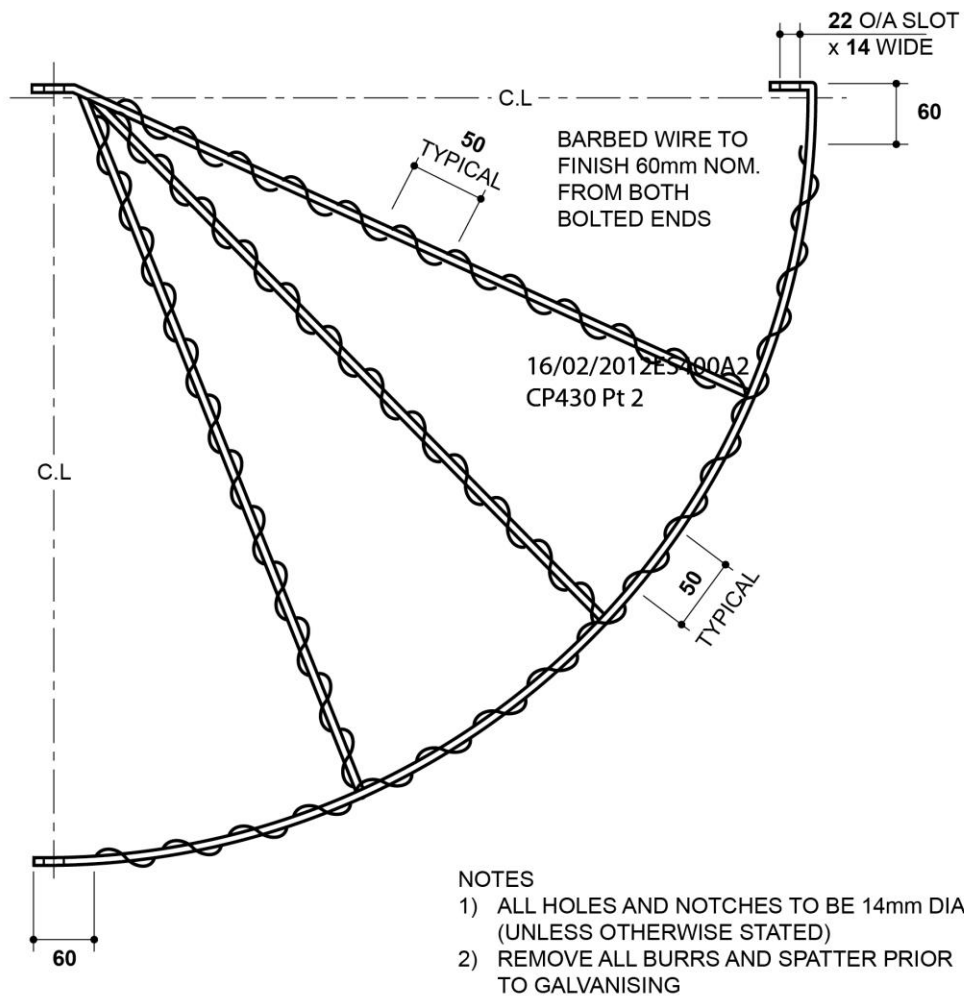
Change information for this issue  
N/A

Appears in  
ES400A2  
CP430 Pt 2

**electricity north west**

I-400A2-ACD-006 Iss 1 sht 5 of 6

Scale: nts Auth: DMT Date: 16/02/2012



④ GATE  
PRE-WIRED AND GALVANISED

CC 133507

ANTI-CLIMBING DEVICE  
STEEL TOWER KIT  
LEG SIZES UP TO AND  
INCLUDING 250mm x 250mm

Change information for this issue  
N/A

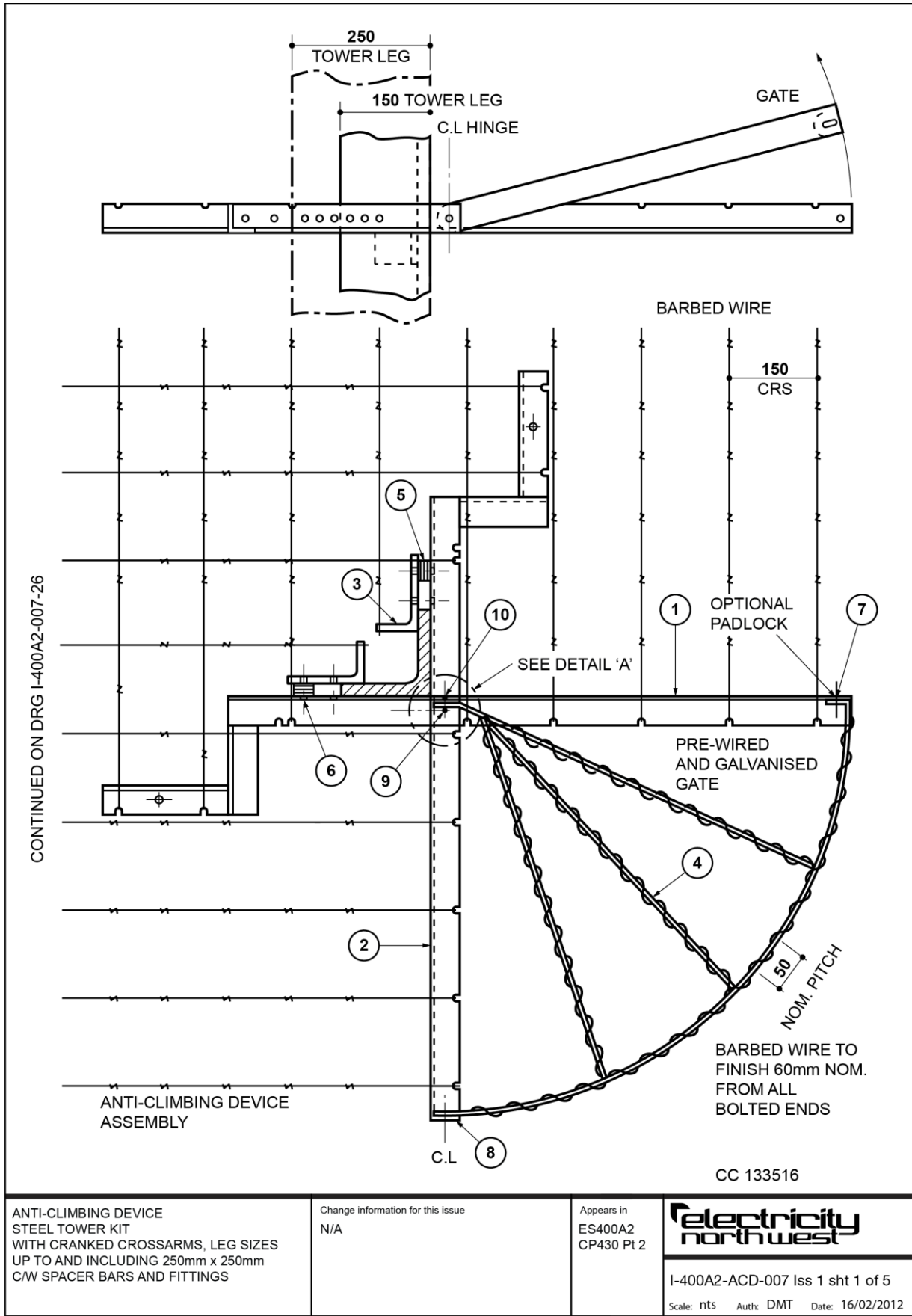
Appears in  
ES400A2  
CP430 Pt 2

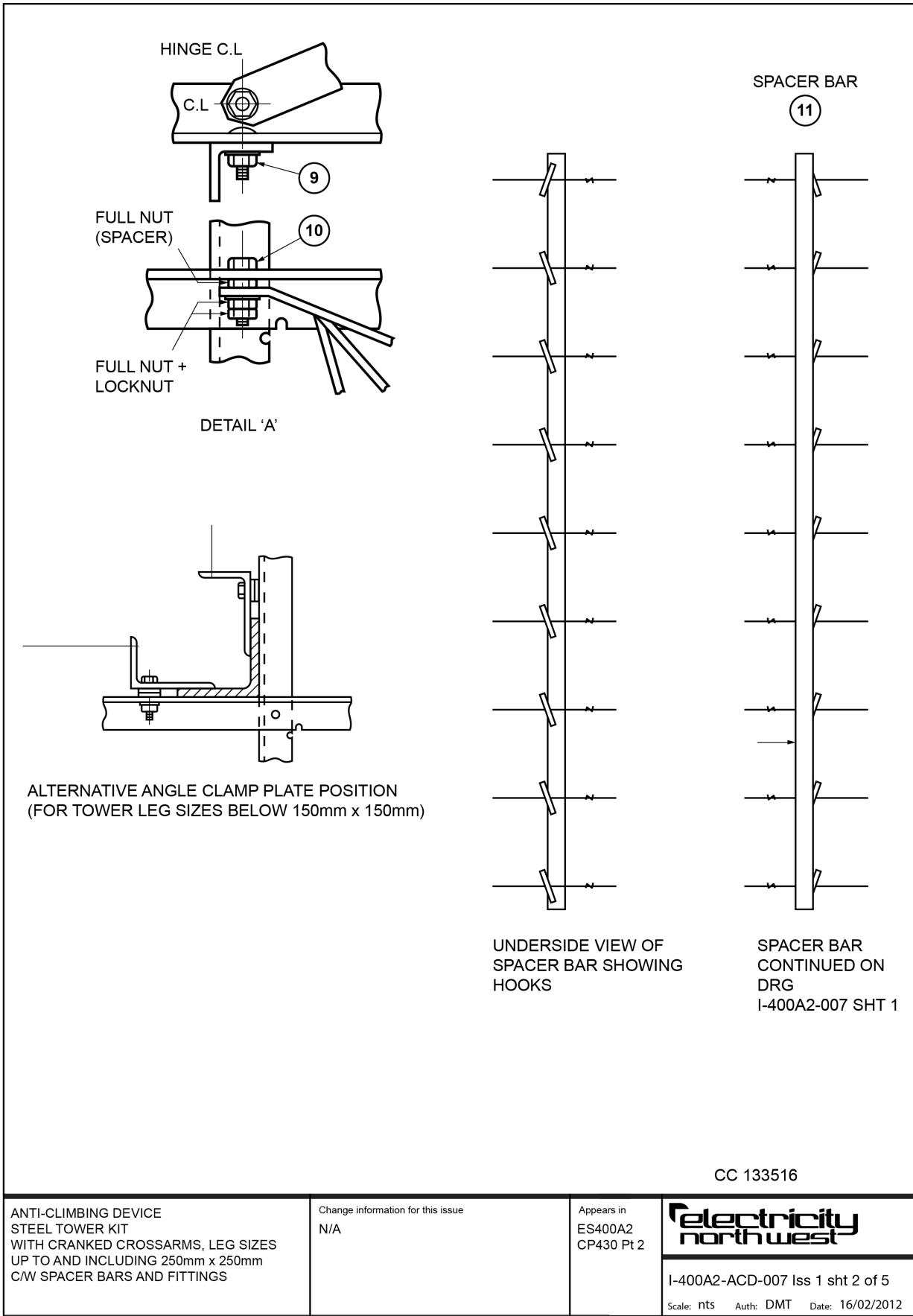
**Anti-Climbing Device, Steel Tower Kit, Leg Sizes up to and Including 250mm x 250mm, C/W Spacer Bars and Fittings – KIT CC Number 133507**

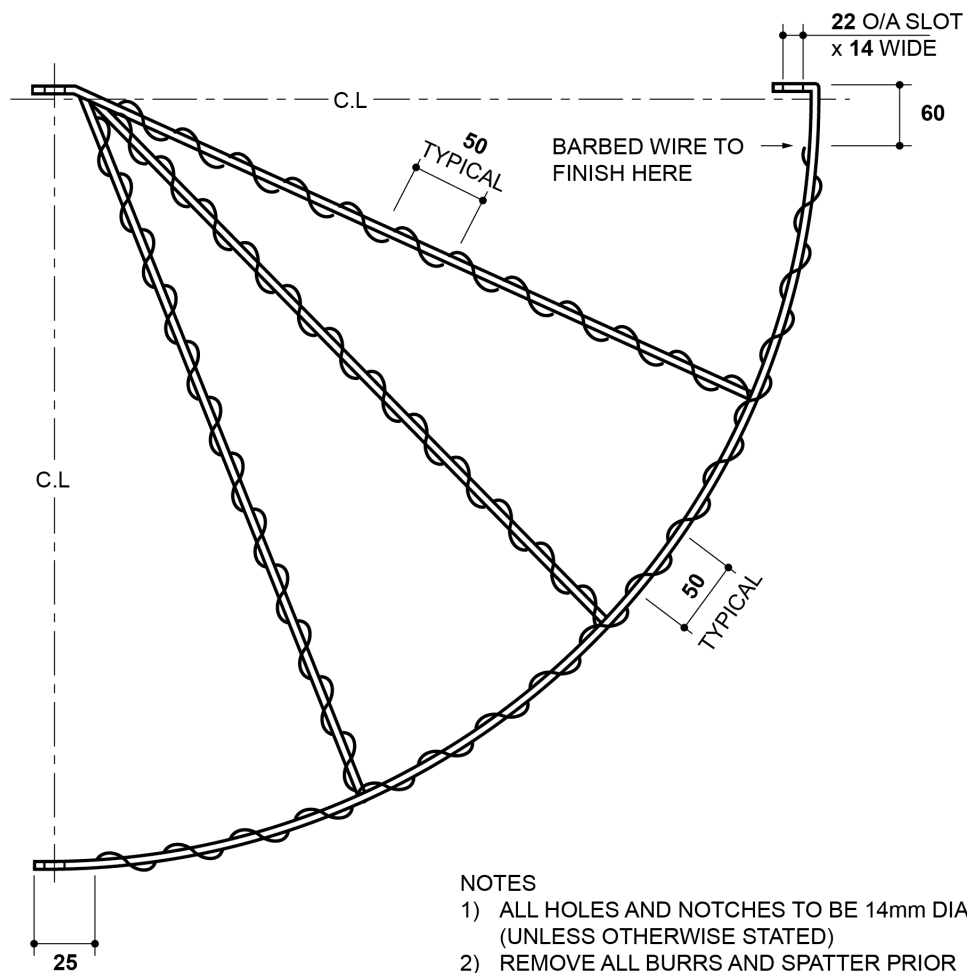
		Drawing No: I-400A2-ACD-006		
Item Number (refer to drawing)	Description	ES Ref No	CC number	Quantity
1*	Support angle	-	-	4
2*	Support angle	-	-	4
3	Notched angle clamp plate	-	-	8
4	Gate	-	-	4
5	Washer	-	-	24
6	Screw, set, M12, 60mm, high-tensile + nut and washer	-	-	16
7	Bolt, M12, 35mm + nyloc and flat washer	-	-	4
8	Bolt, M12, 35mm + full nut, lock nut and flat washer	-	-	4
9	Bolt, dome head, M12, 40mm + full nut and flat washer	-	-	4
10	Bolt, M12, 40mm + 2 full nuts, lock nut and flat washer	-	-	4
-	Gate hook (Refer to Dwg I-400A2-ACD-011) + flat washer	ES400A2	133521	4 4
-	Spacer bar, 9-strand (long) (Refer to Dwg I-400A2-ACD-010)	ES400A2	133515	20
-	Stainless steel ties to Drawing I-400A2-ACD-012	ES400A2	-	64
(Additional Items That May be Required for Kit - But Not Included in Kit Contents)				
-	Barbed wire	ES400W4	197408	As req

\* Pre-wiring/not pre-wiring options need to be specified (see drawing).









NOTES

- 1) ALL HOLES AND NOTCHES TO BE 14mm DIA (UNLESS OTHERWISE STATED)
- 2) REMOVE ALL BURRS AND SPATTER PRIOR TO GALVANISING

④ GATE PRE-WIRED AND GALVANISED

CC 133516

ANTI-CLIMBING DEVICE  
STEEL TOWER KIT  
WITH CRANKED CROSSARMS, LEG SIZES  
UP TO AND INCLUDING 250mm x 250mm  
C/W SPACER BARS AND FITTINGS

Change information for this issue  
N/A

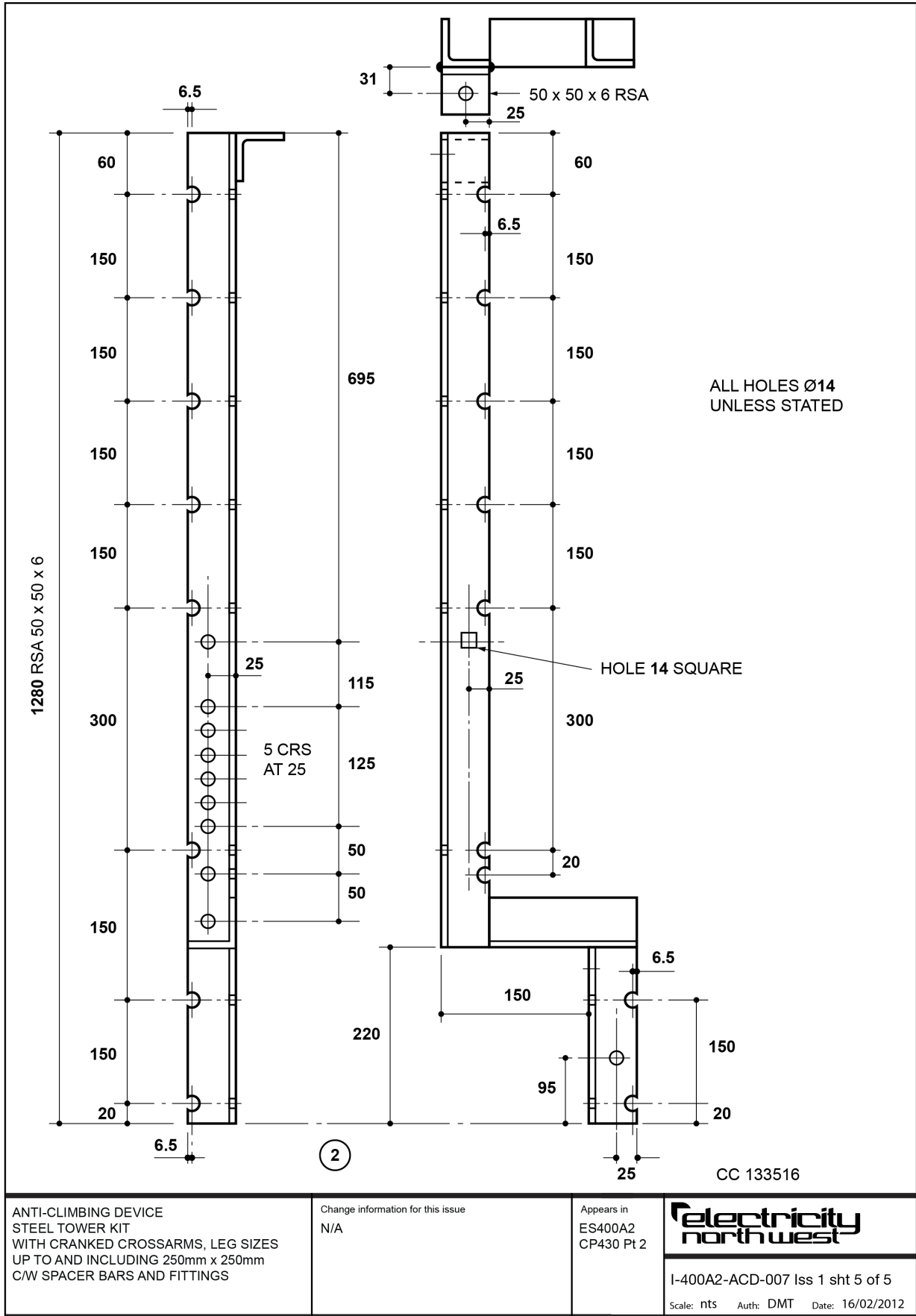
Appears in  
ES400A2  
CP430 Pt 2



I-400A2-ACD-007 Iss 1 sht 3 of 5

Scale: nts Auth: DMT Date: 16/02/2012





ANTI-CLIMBING DEVICE  
STEEL TOWER KIT  
WITH CRANKED CROSSARMS, LEG SIZES  
UP TO AND INCLUDING 250mm x 250mm  
C/W SPACER BARS AND FITTINGS

Change information for this issue  
N/A

Appears in  
ES400A2  
CP430 Pt 2

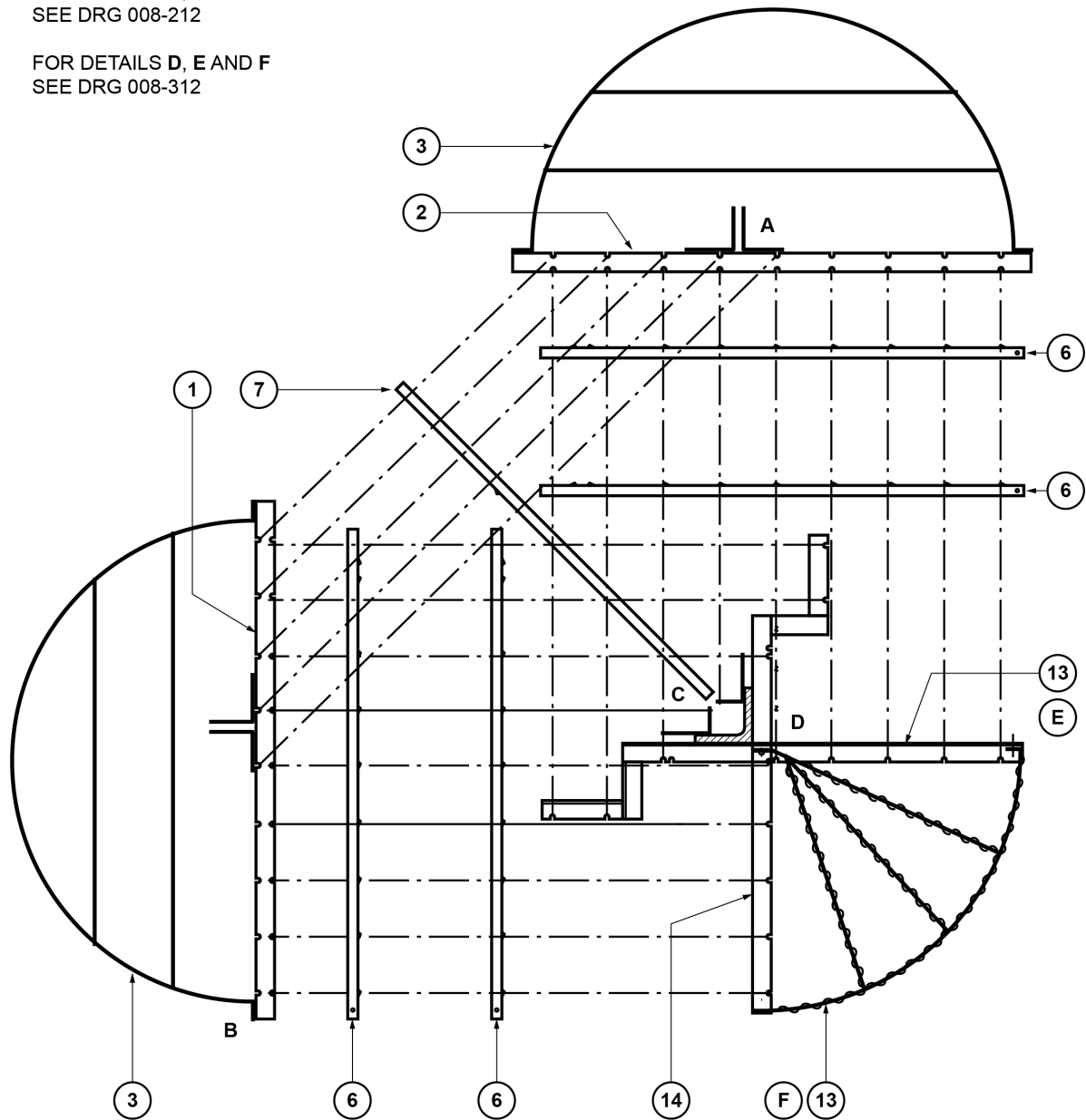
**Anti-Climbing Device, Steel Tower Kit with Cranked Crossarms, Leg Sizes up to and Including 250mm x 250mm, C/W Spacer Bars and Fittings – KIT CC Number 133516**

		Drawing No: I-400A2-ACD-007		
Item Number (refer to drawing)	Description	ES Ref No	CC number	Quantity
1*	Support angle	-	-	4
2*	Support angle	-	-	4
3	Notched angle clamp plate (refer to Dwg I-400A2-ACD-006, item 3)	-	-	8
4	Gate	-	-	4
5	Washer (refer to Dwg I-400A2-ACD-006, item 5)	-	-	24
6	Screw, set, M12, 60mm, high-tensile + nut and washer	-	-	16
7	Bolt, M12, 35mm + nyloc and flat washer	-	-	4
8	Bolt, M12, 35mm + full nut, lock nut and flat washer	-	-	4
9	Bolt, dome head, M12, 40mm + full nut and flat washer	-	-	4
10	Bolt, M12, 40mm + 2 full nuts, lock nut and flat washer	-	-	4
-	Gate hook (Refer to Dwg I-400A2-ACD-011) + flat washer	ES400A2	133521	4 4
11	Spacer bar, 9-strand (long) (Refer to Dwg I-400A2-ACD-010)	ES400A2	133515	20
-	Stainless steel ties to Drawing I-400A2-ACD-012	ES400A2	-	64
(Additional Items That May be Required for Kit - But Not Included in Kit Contents)				
-	Barbed wire	ES400W4	197408	As req

\* Pre-wiring/not pre-wiring options need to be specified (see drawing).

NOTE  
FOR DETAILS A, B AND C  
SEE DRG 008-212

FOR DETAILS D, E AND F  
SEE DRG 008-312



GENERAL ARRANGEMENT

CC 133508

ANTI-CLIMBING DEVICE  
STEEL TOWER KIT  
WIDE BASED TOWER  
C/W SPACER BARS AND FITTINGS

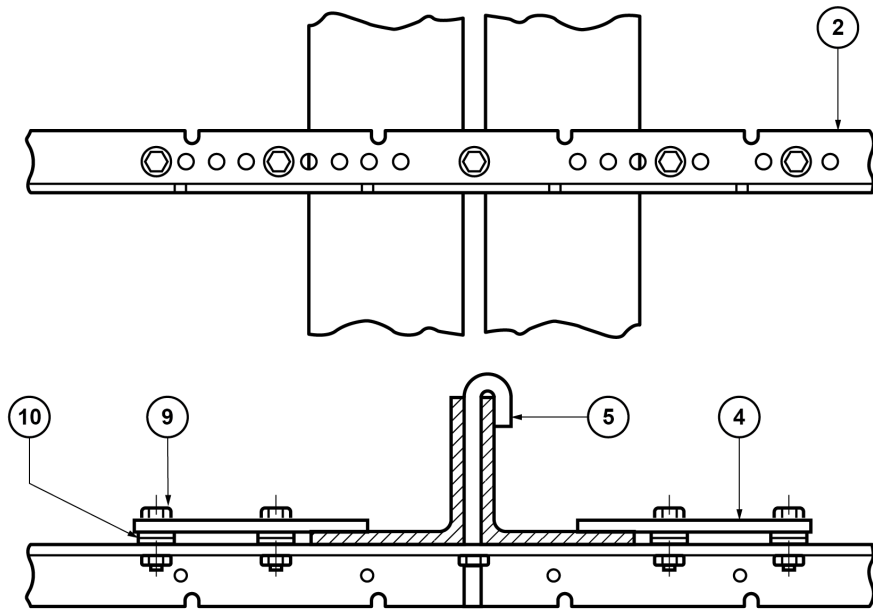
Change information for this issue  
Item 7 now the same as item 6  
Holes for J bolts removed

Appears in  
ES400A2  
CP430 Pt 2

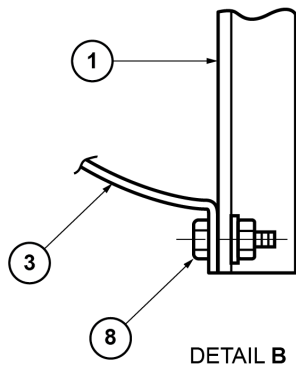


I-400A2-ACD-008 Iss 2 sht 1 of 12

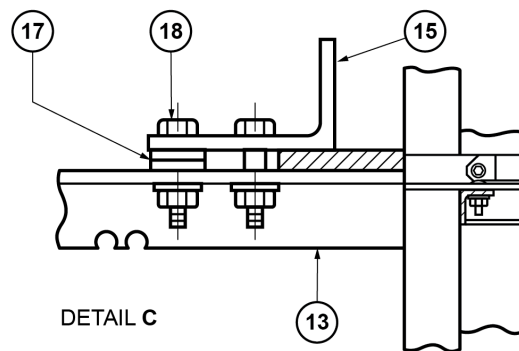
Scale: nts Auth: DMT Date: 16/02/2012



DETAIL A



DETAIL B



DETAIL C

CC 133508

ANTI-CLIMBING DEVICE  
STEEL TOWER KIT  
WIDE BASED TOWER  
C/W SPACER BARS AND FITTINGS

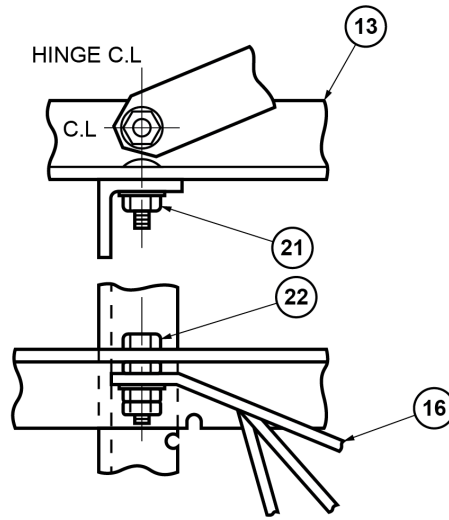
Change information for this issue  
J bolts removed

Appears in  
ES400A2  
CP430 Pt 2

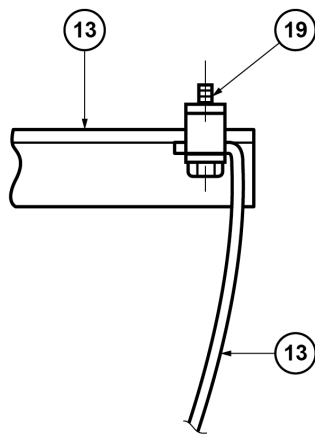


I-400A2-ACD-008 Iss 2 sht 2 of 12  
Scale: nts Auth: DMT Date: 16/02/2012

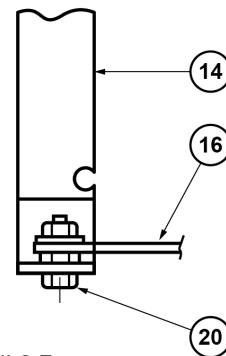




DETAIL D



DETAILS E



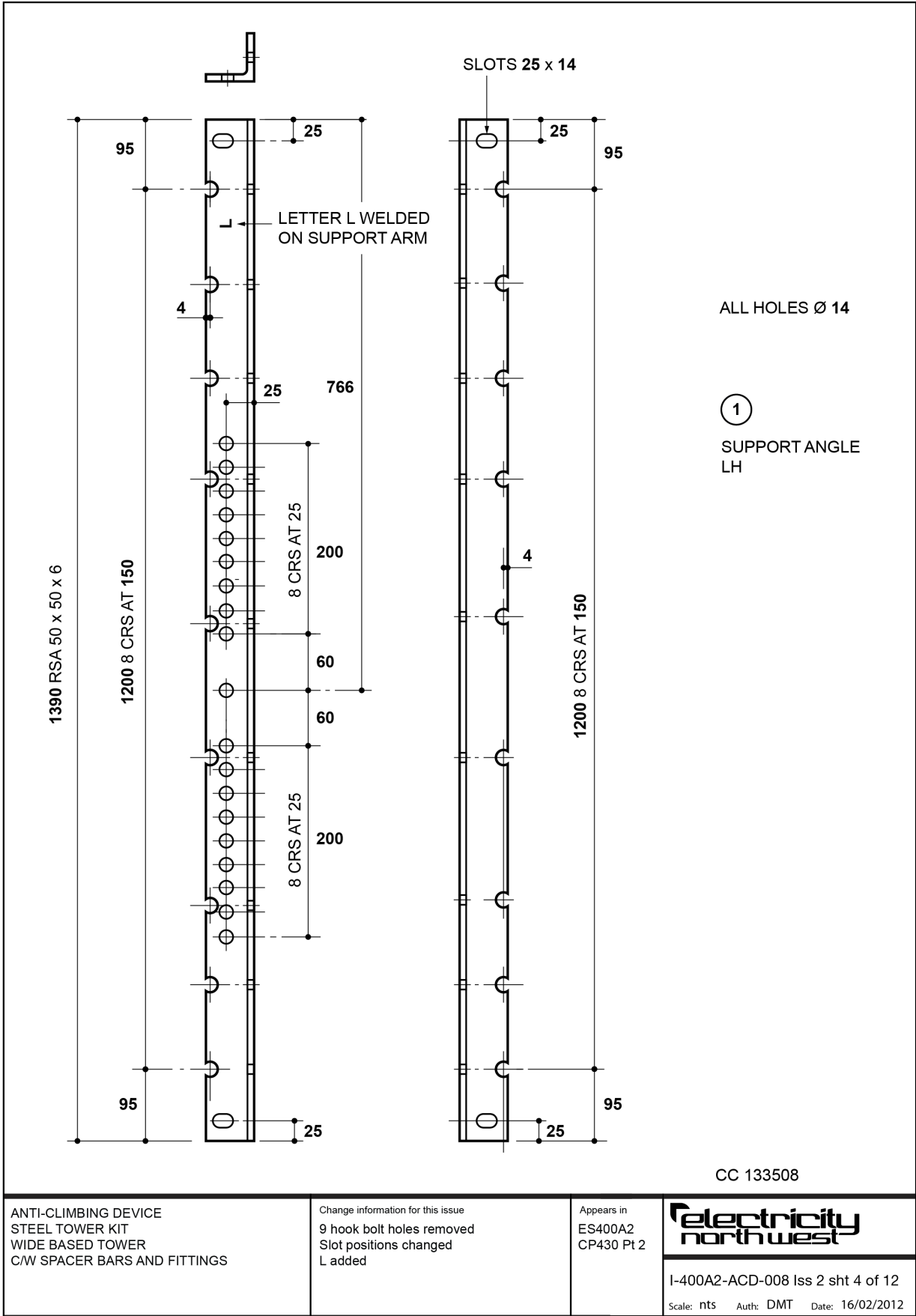
DETAILS F

CC 133508

ANTI-CLIMBING DEVICE  
STEEL TOWER KIT  
WIDE BASED TOWER  
CW SPACER BARS AND FITTINGS

Change information for this issue  
N/A

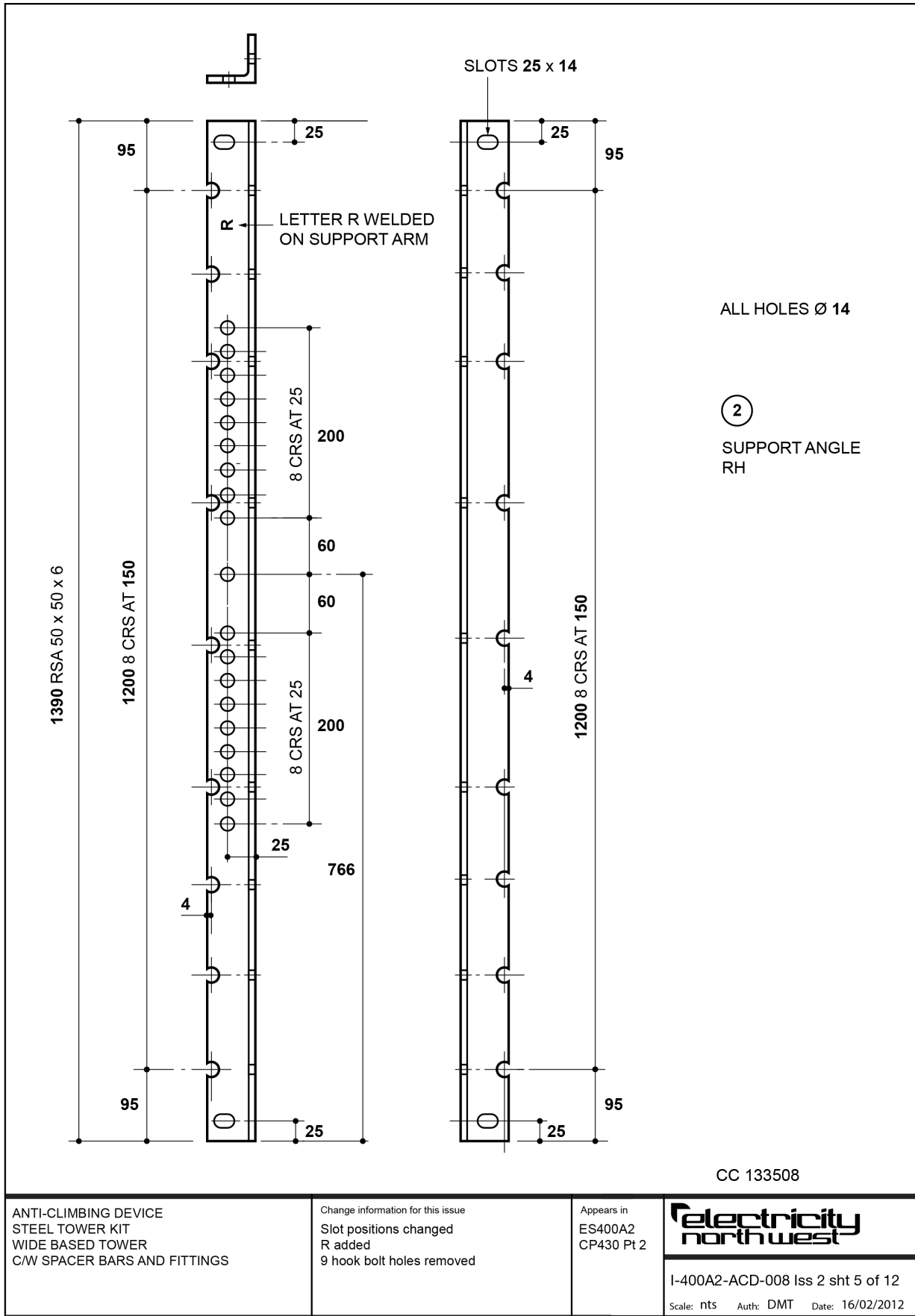
Appears in  
ES400A2  
CP430 Pt 2



ANTI-CLIMBING DEVICE  
STEEL TOWER KIT  
WIDE BASED TOWER  
C/W SPACER BARS AND FITTINGS

Change information for this issue  
9 hook bolt holes removed  
Slot positions changed  
L added

Appears in  
ES400A2  
CP430 Pt 2



ANTI-CLIMBING DEVICE  
STEEL TOWER KIT  
WIDE BASED TOWER  
C/W SPACER BARS AND FITTINGS

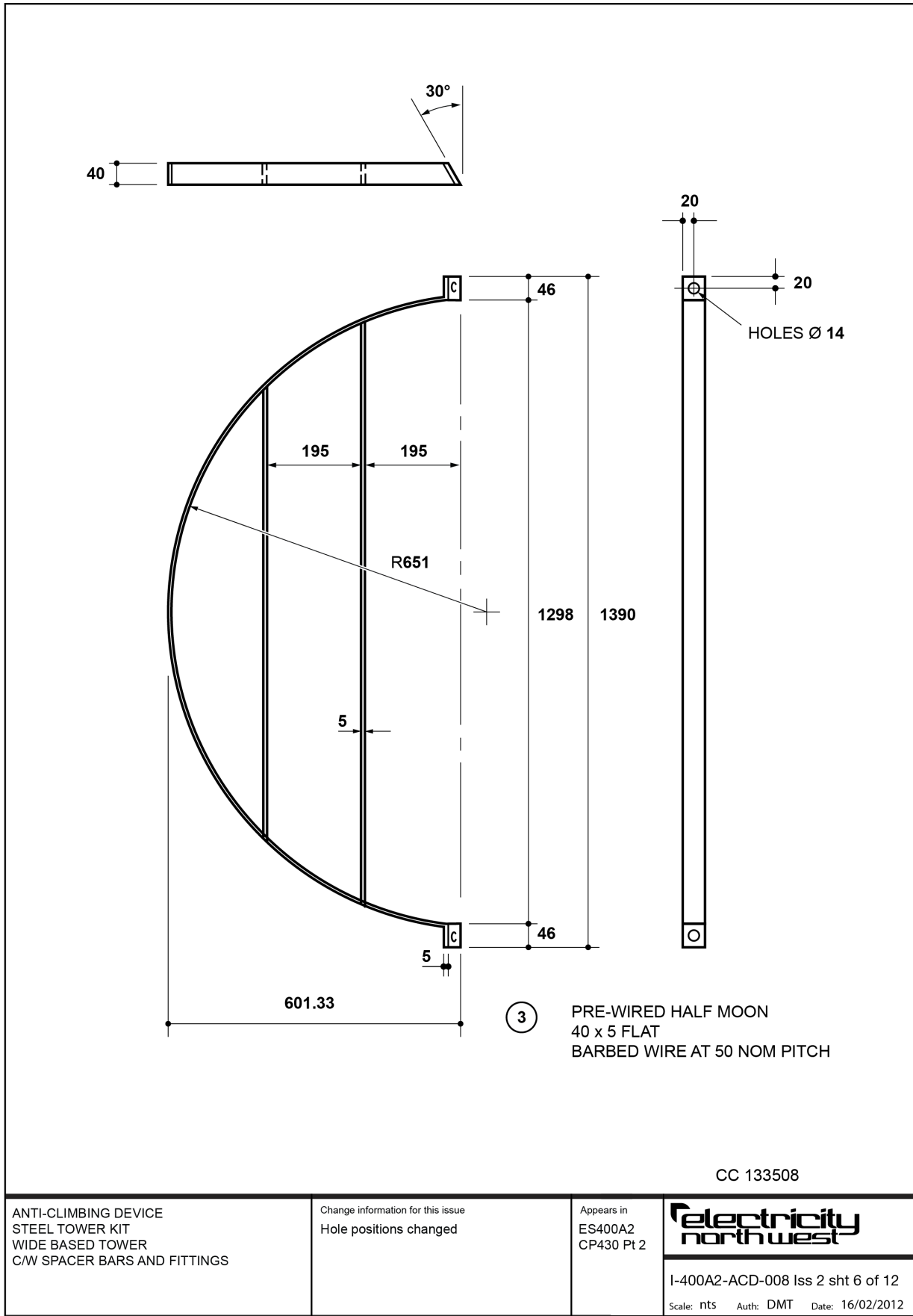
Change information for this issue  
Slot positions changed  
R added  
9 hook bolt holes removed

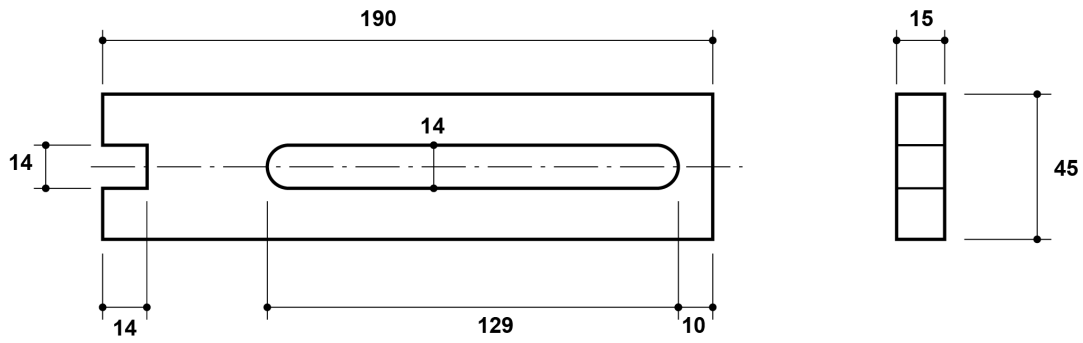
Appears in  
ES400A2  
CP430 Pt 2



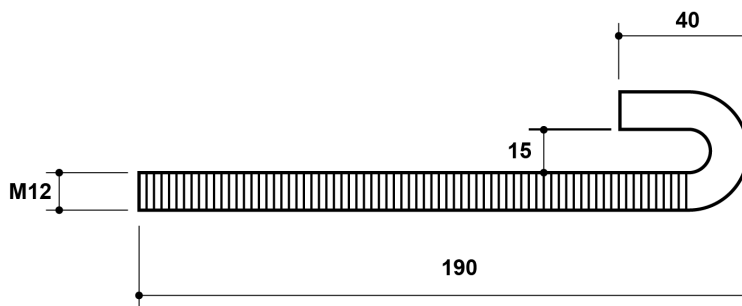
I-400A2-ACD-008 Iss 2 sht 5 of 12

Scale: nts Auth: DMT Date: 16/02/2012





④ LOCK PLATE



⑤ HOOK BOLT

CC 133508

ANTI-CLIMBING DEVICE  
STEEL TOWER KIT  
WIDE BASED TOWER  
C/W SPACER BARS AND FITTINGS

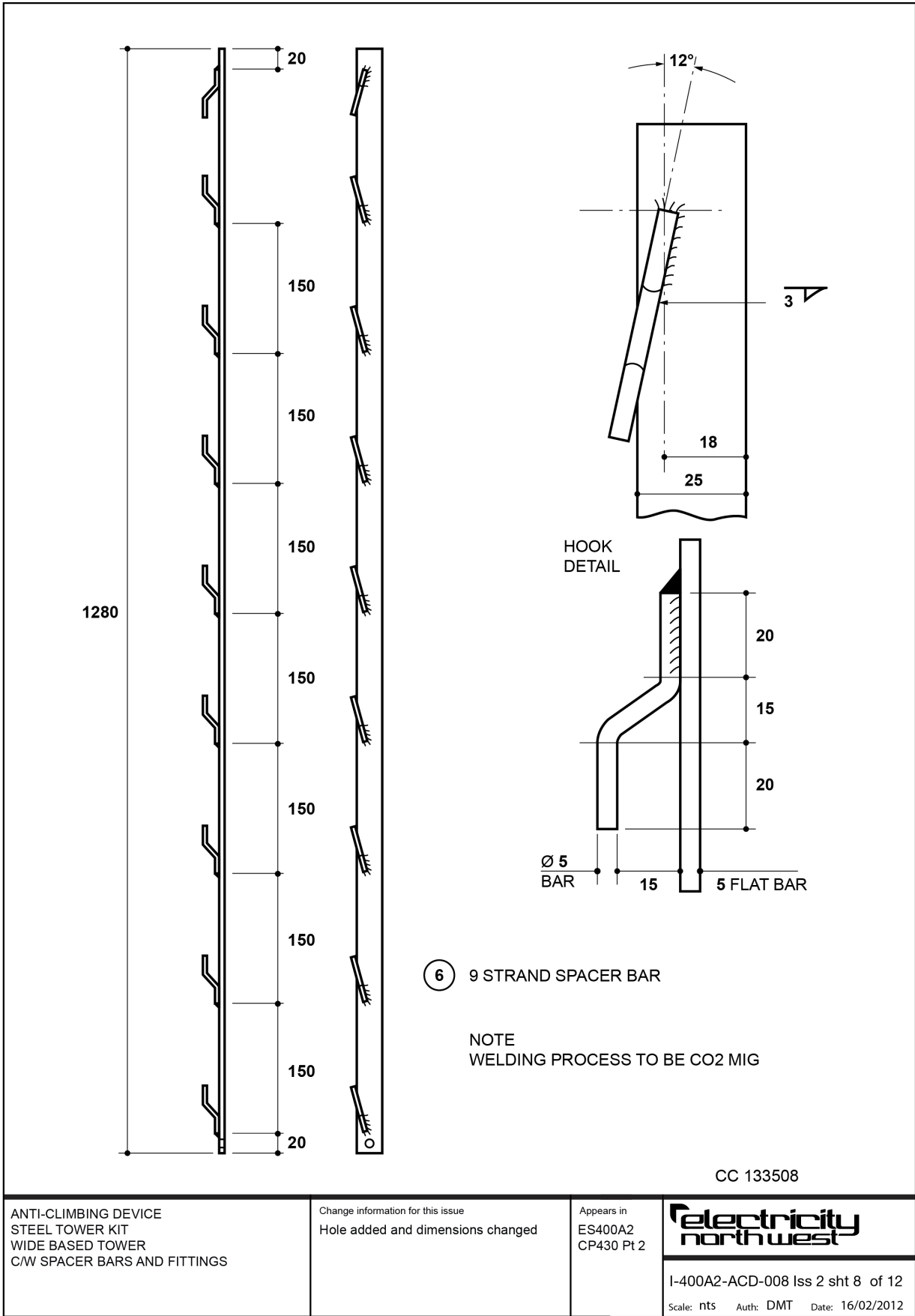
Change information for this issue  
LOCK PLATE THICKNESS INCREASED  
TO 15mm

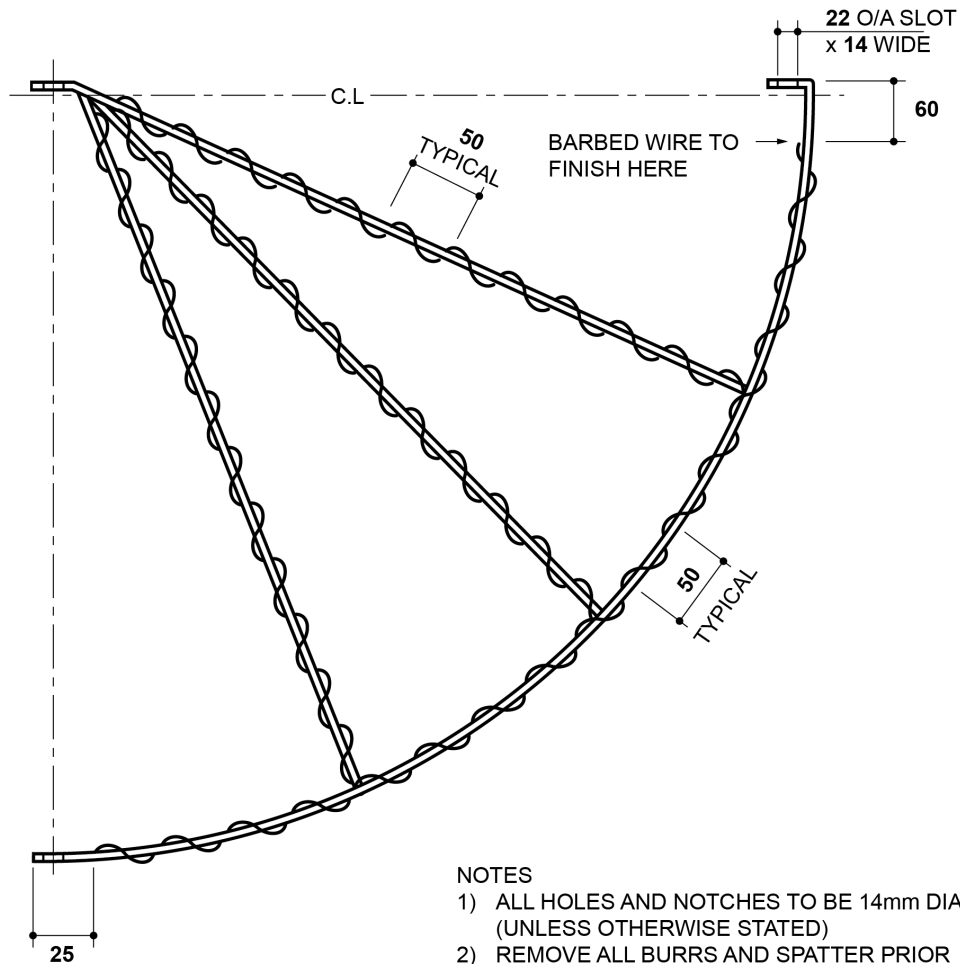
Appears in  
ES400A2  
CP430 Pt 2



I-400A2-ACD-008 Iss 2 sht 7 of 12

Scale: nts Auth: DMT Date: 16/02/2012





NOTES

- 1) ALL HOLES AND NOTCHES TO BE 14mm DIA (UNLESS OTHERWISE STATED)
- 2) REMOVE ALL BURRS AND SPATTER PRIOR TO GALVANISING

**16** GATE  
PRE-WIRED AND GALVANISED

CC 133508

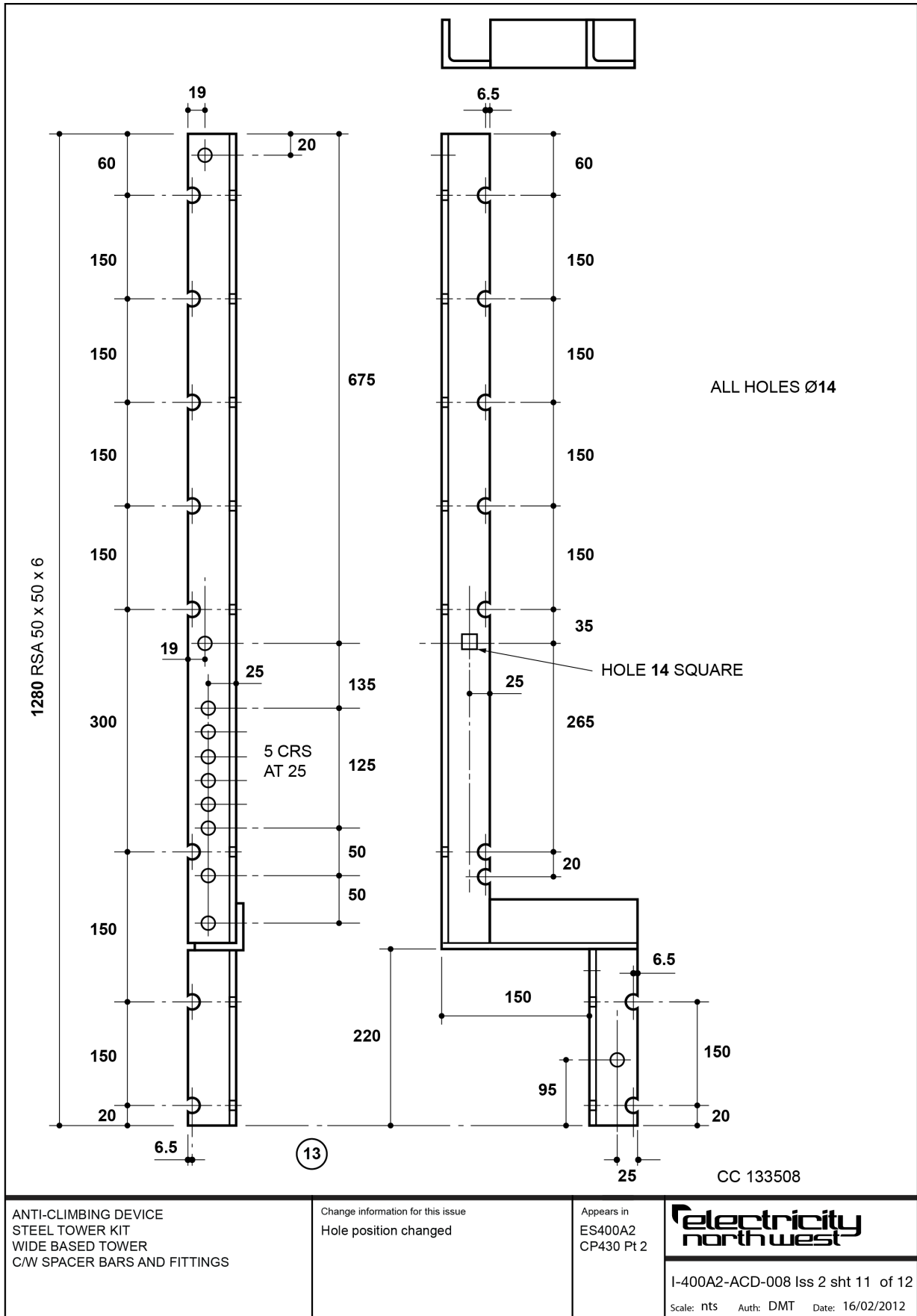
ANTI-CLIMBING DEVICE  
STEEL TOWER KIT  
WIDE BASED TOWER  
C/W SPACER BARS AND FITTINGS

Change information for this issue  
N/A

Appears in  
ES400A2  
CP430 Pt 2







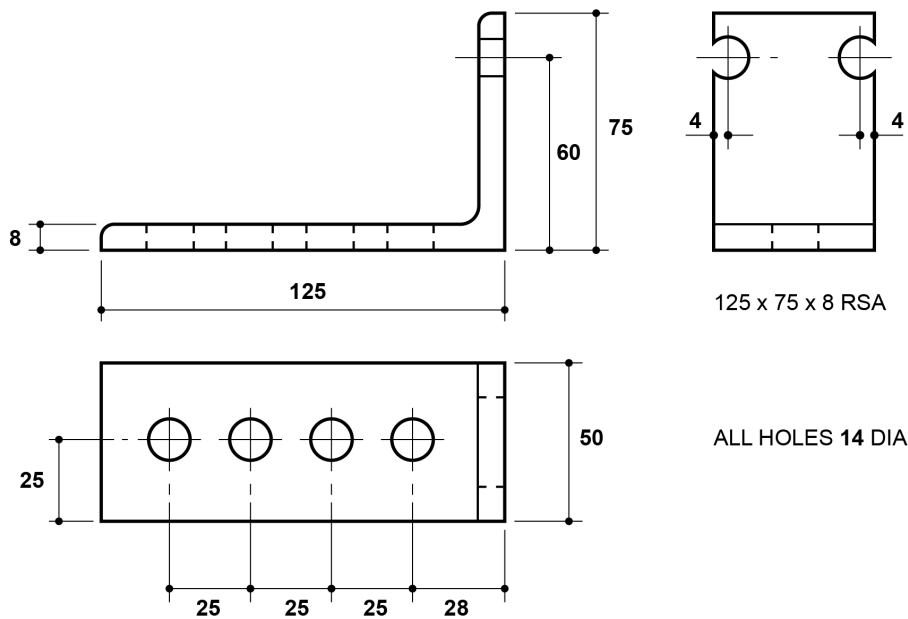
ANTI-CLIMBING DEVICE  
STEEL TOWER KIT  
WIDE BASED TOWER  
C/W SPACER BARS AND FITTINGS

Change information for this issue  
Hole position changed

Appears in  
ES400A2  
CP430 Pt 2

FOR DETAILS SEE DRG I-400A2-ACD-011

19 GATE HOOK



14 NOTCHED ANGLE CLAMP PLATE

CC 133508

ANTI-CLIMBING DEVICE  
STEEL TOWER KIT  
WIDE BASED TOWER  
C/W SPACER BARS AND FITTINGS

Change information for this issue  
N/A

Appears in  
ES400A2  
CP430 Pt 2



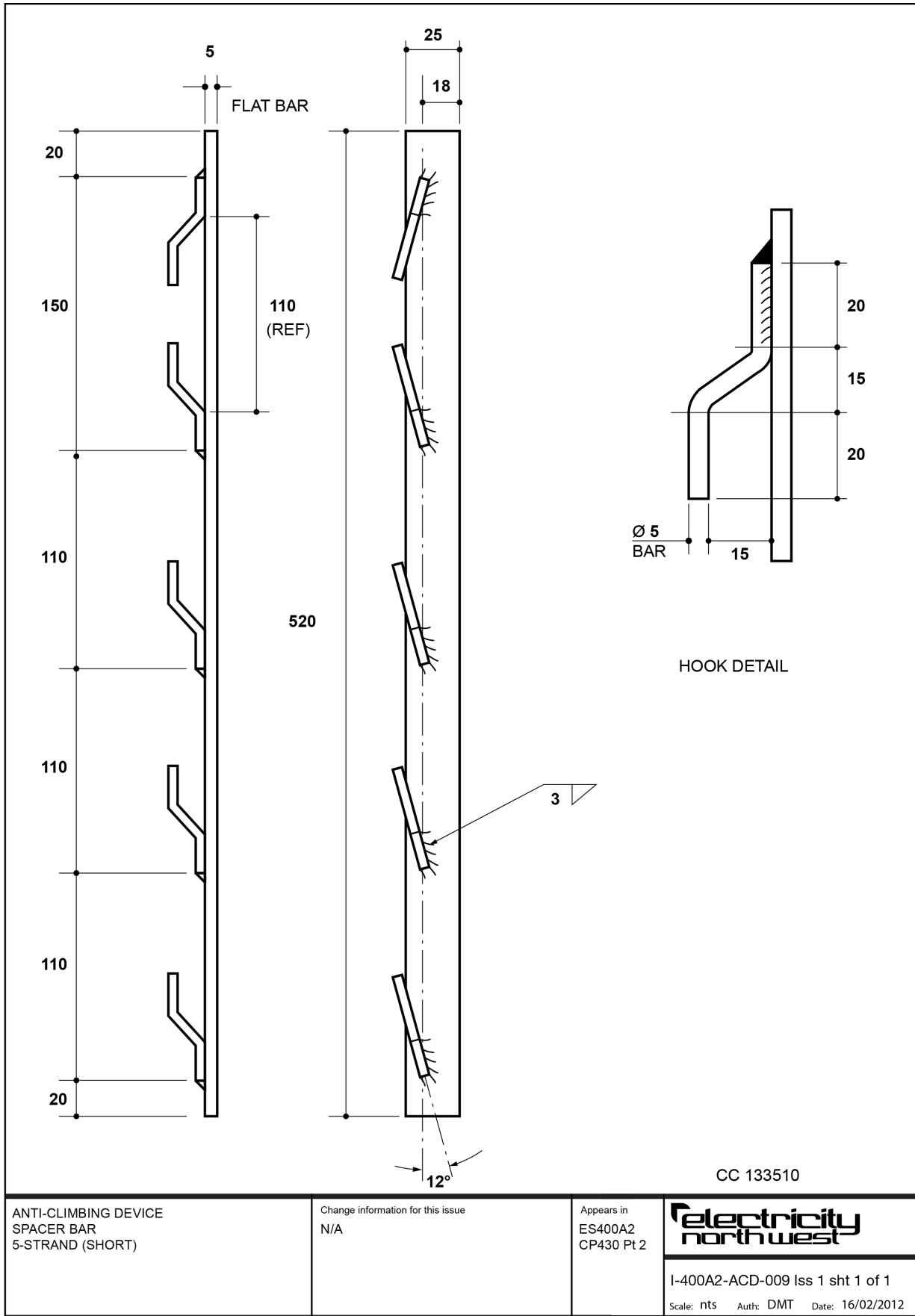
I-400A2-ACD-008 Iss 2 sht 12 of 12  
Scale: nts Auth: DMT Date: 16/02/2012

**Anti-Climbing Device, Steel Tower Kit, Wide Based Tower, C/W Spacer Bars and Fittings – KIT CC Number 133508**

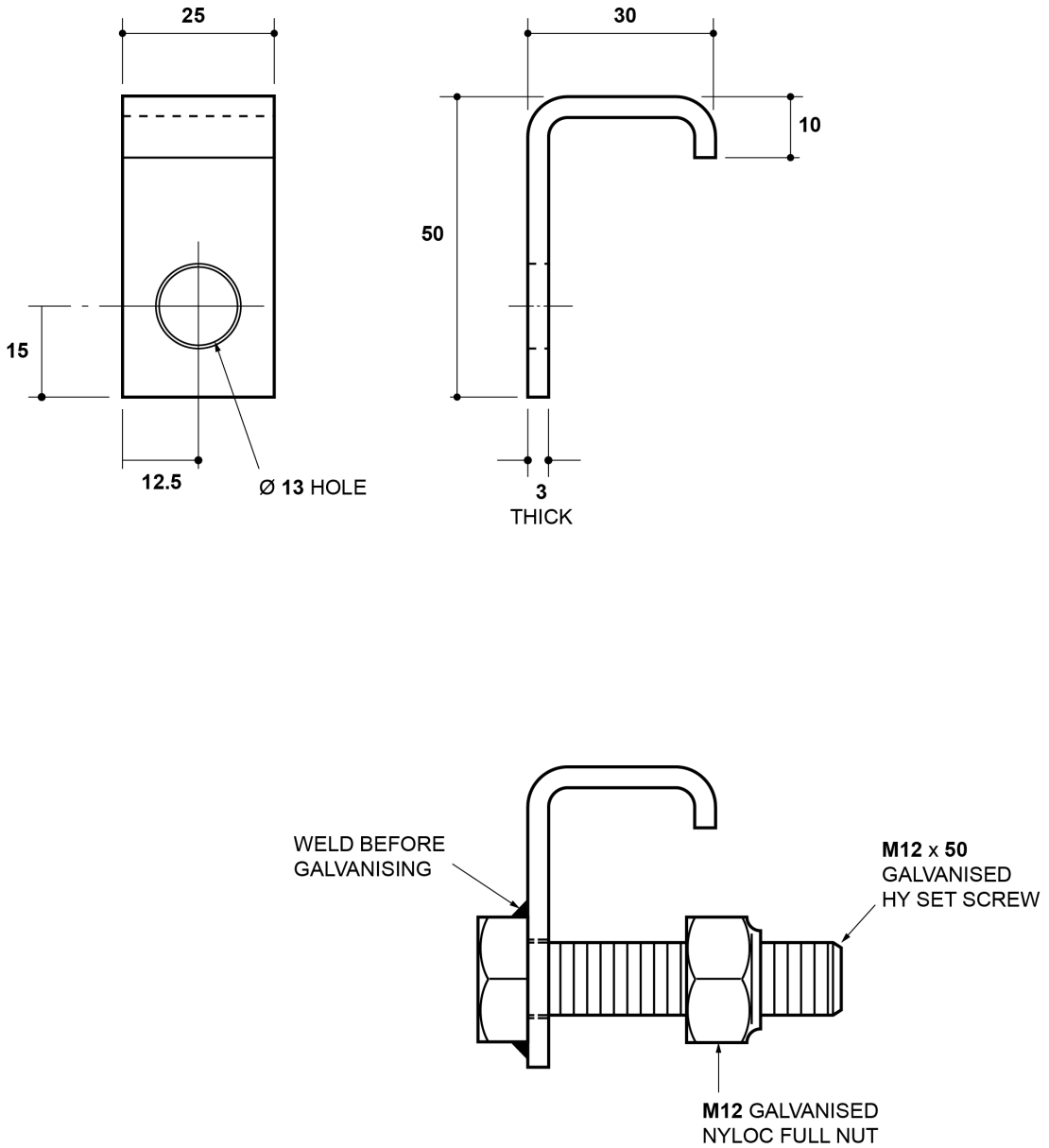
Item Number (refer to drawing)	Description	Drawing No: I-400A2-ACD-008		
		ES Ref No	CC number	Quantity
1	Support angle	-	-	4
2	Support angle	-	-	4
3	Pre-wired half moon	-	-	8
4	Lock plate	-	-	16
5	Hook bolt + nut and washer	-	-	8
6	Spacer bar, 9-strand (long)	-	133515	16
7	Spacer bar, 5-strand (short) (Refer to Dwg I-400A2-ACD-009)	ES400A2	133510	4
8	Screw, set, M12, 35mm + nut and washer	-	-	16
9	Bolt, M12, 60mm, high tensile + 1 nut and washer	-	-	32
10	Washer, packing, M12, 5mm thick, base galvanized	-	-	48
11	Bolt, hook, M12, 105mm + 2 nuts and washers	-	-	72
12	Not used	-	-	-
13	Support angle	-	-	4
14	Support angle	-	-	4
15	Notched angle clamp plate	-	-	8
16	Gate	-	-	4
17	Washer, packing, M12, 5mm thick, bolt galvanized	-	-	24
18	Screw, set, M12, 60mm, high-tensile steel + nut and washer	-	-	16
19	Gate hook (Refer to Dwg I-400A2-ACD-011) + flat washer	ES400A2	133521	4 4
20	Bolt, M12, 35mm + full nut, lock nut and flat washer	-	-	4
21	Bolt, dome head, M12, 40mm + full nut and flat washer	-	-	4
22	Bolt, M12, 40mm + 2 full nuts, lock nut and flat washer	-	-	4
23	Stainless steel ties to Drawing I-400A2-ACD-012	ES400A2	-	200

**NOTE:**

- (a) Item 7: supplied full length; to be cut to length according to tower requirements.
- (b) Item 11: number required will depend on number of lines of barbed wire required to fill the central gap.





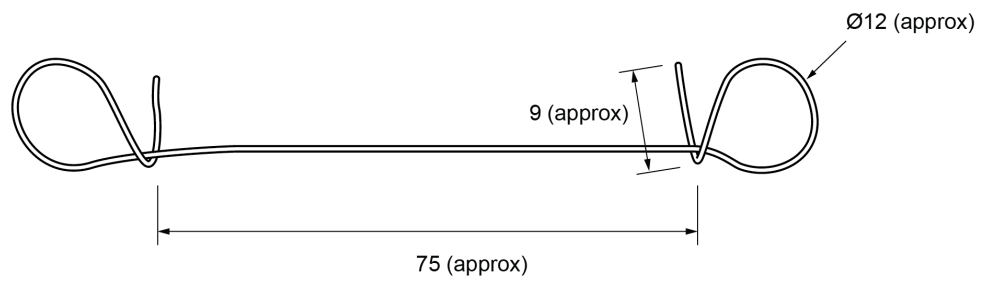


CC 133521

ANTI-CLIMBING DEVICE  
STEEL TOWER  
GATE HOOK

Change information for this issue  
Screw length increased,  
hole dia decreased

Appears in  
ES400A2  
CP430 Pt2



Note:  
Wire shall be 17 SWG stainless steel, AISI Grade 304

STAINLESS STEEL TIE

Change information for this issue  
N/A

Appears in  
ES400A2

**electricity  
north west**

I-400A2-ACD-012 Iss 1 sht 1 of 1

Scale: nts Auth: DMT Date: 30/10/2014

## Appendix B – Conformance Declaration

### SECTION-BY-SECTION CONFORMANCE WITH SPECIFICATION

The Tenderer shall declare conformance or otherwise for each product/service or range of products/services, section-by-section, using the following Conformance Declaration Codes.

#### Conformance Declaration Codes:

<b>N/A =</b>	Clause is not applicable/appropriate to the product/service.
<b>C1 =</b>	The product/service conforms fully with the requirements of this clause.
<b>C2 =</b>	The product/service conforms partially with the requirements of this clause.
<b>C3 =</b>	The product/service does not conform to the requirements of this clause.
<b>C4 =</b>	The product/service does not currently conform to the requirements of this clause, but the manufacturer proposes to modify and test the product in order to conform.

**Manufacturer:**

**Product/Service Description:**

**Product/Service Reference:**

**Name:**

**Company:**

**Signature:**



**SECTION-BY-SECTION CONFORMANCE**

Section	Section Topic	Conformance Declaration Code	Remarks * (must be completed if code is not C1)
4.1	Product not to be Changed		
4.2	Electricity North West Technical Approval		
4.3	Quality Assurance		
4.4	Formulation		
4.5	Identification Markings		
4.6	Minimum Life Expectancy		
4.7	Product Conformity		
4.8	Confirmation of Conformance		
5.1	Requirements for Type Tests at the Supplier's Premises		
5.2	Requirement for Routine Tests at the Supplier's Premises		
6.1	Steelwork		
6.2	Steelwork Finish		
6.3	Barbed Wire		
6.4	Wire Staples		

\* Applicable specifications shall be stated in the Remarks column where alternatives are quoted within a section. The Remarks column shall also be used to indicate cases where the products or services exceed the quoted specifications.

**Additional Notes:**