

NOTE:
 THE PREFERRED ARRANGEMENT FOR A SERVICE INSTALLATION IS AN OUTSIDE METER VIEWING CUPBOARD. THIS DRAWING SHOWS AN INTERNAL POSITION ON AN OUTSIDE WALL WHICH IS ACCEPTABLE UNDER CERTAIN CIRCUMSTANCES.

THE LENGTH OF SERVICE CABLE INSIDE ANY BUILDING SHALL NOT NORMALLY EXCEED 2m



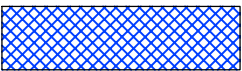
MINIMUM OF 750mm ACCESS MUST BE ALLOWED IN FRONT OF METER BOARD

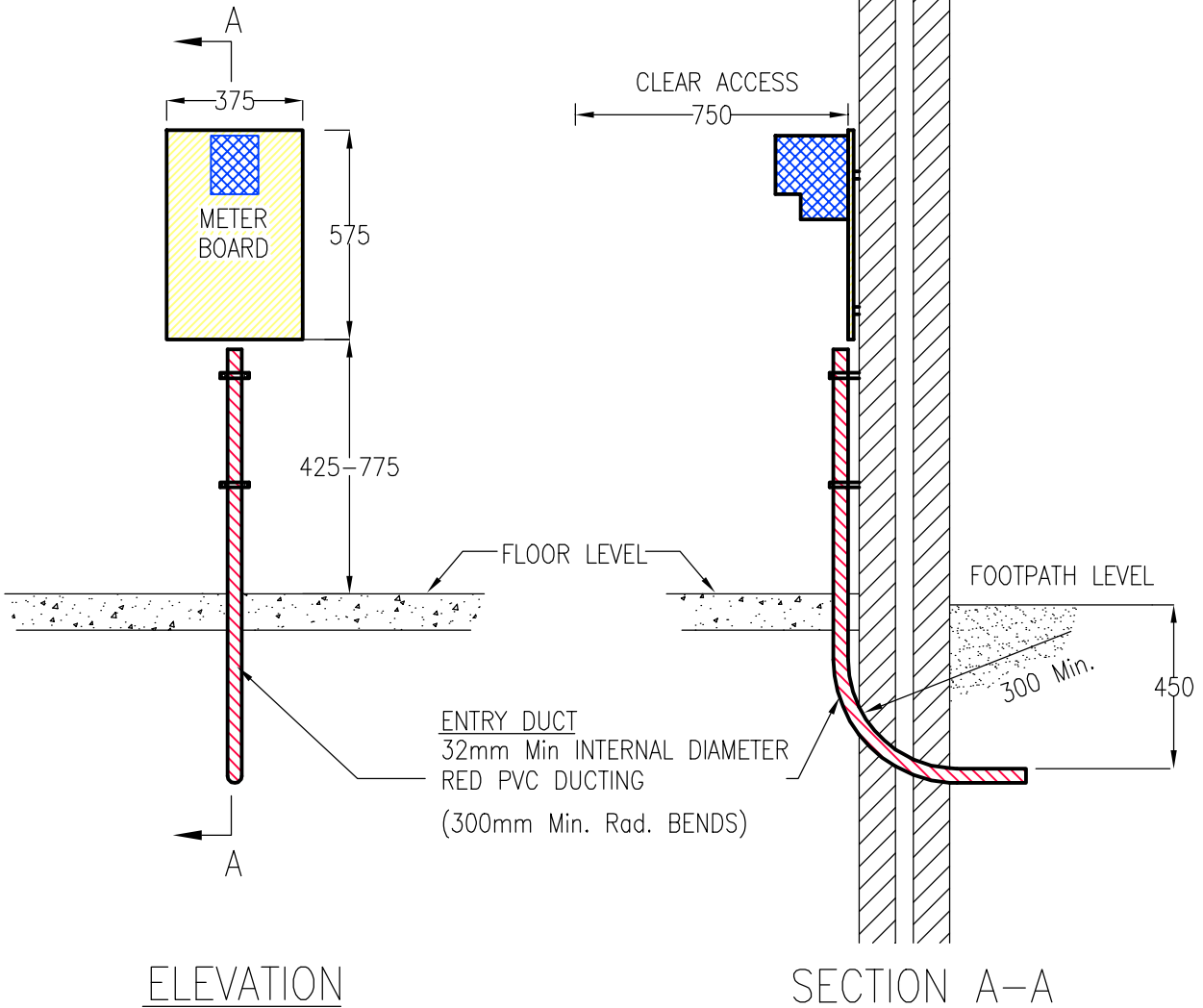
ALL DUCTING TO ES 400 D4. WHERE DUCTING IS FIXED TO WALL IT SHALL BE SECURED USING SADDLES AT INTERVALS NOT EXCEEDING 300mm.

PVC ENTRY DUCT MUST BE RED – WE CANNOT LAY CABLE IN ANY OTHER COLOUR

METERS SHALL BE MOUNTED AT A HEIGHT OF NOT LESS THAN 1m AND NOT MORE THAN 1.35m ABOVE FLOOR LEVEL.

INSTALLATION RESPONSIBILITIES

-  ELECTRICITY NORTH WEST LIMITED TO FIT INCOMING CABLE AND METER BOARD
-  CUSTOMER TO FIT ENTRY DUCT
-  SUPPLIER TO FIT METER



TITLE:
 SERVICE DUCT ENTRY
 FOR USE WITH STANDARD
 SINGLE PHASE SERVICE
 FLAT METER BOARD

Drawn: AGL

Date: 2-07-09

Scale: 1:20 @ A4

Drawing No:

ENWL-035C